

Madison, Wisconsin

CITY OF MADISON

CITY ENGINEERING DIVISION

DEPARTMENT OF PUBLIC WORKS

PLAN OF PROPOSED IMPROVEMENT

INDEX OF SHEETS

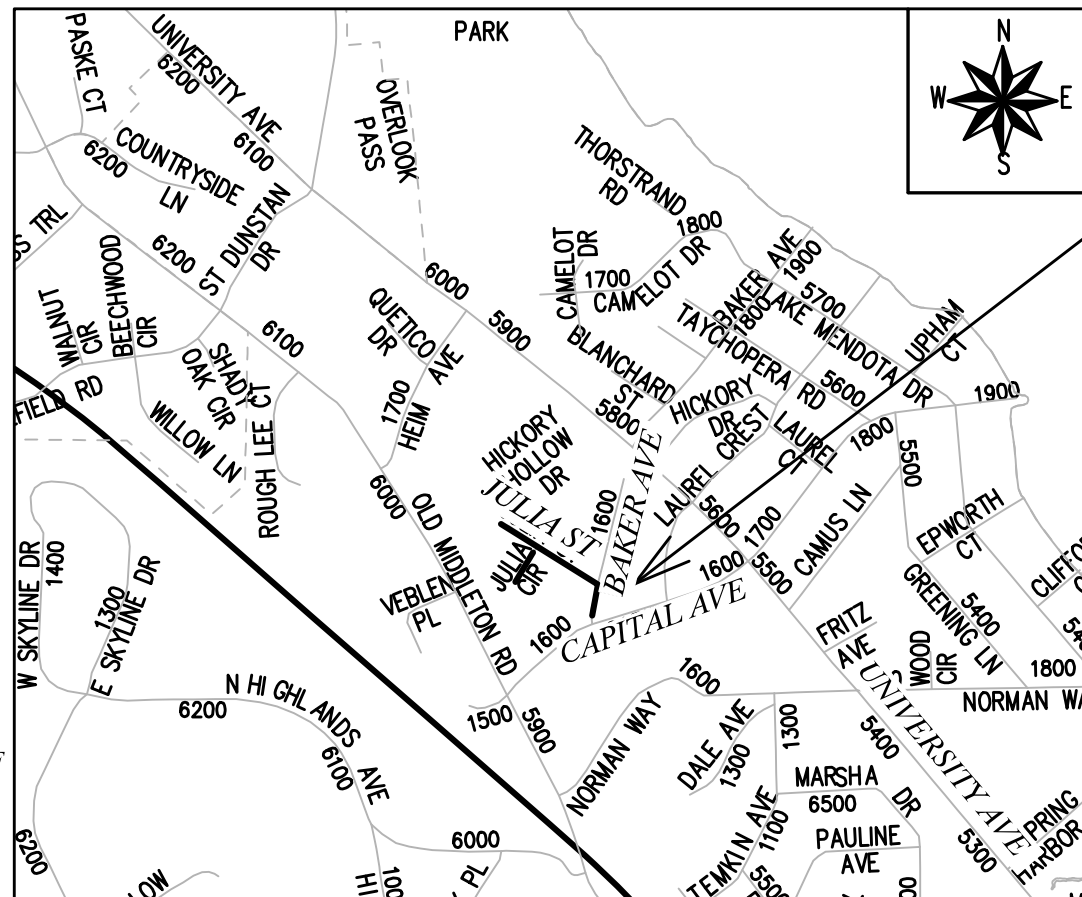
SHEET NO.	DETAILS
D1	DETAILS
E1-E3	EROSION CONTROL PLANS
P1-P3	PLAN & PROFILES
U1-U3	UTILITY PLAN AND PROFILE
U4	SANITARY SCHEDULE
U5-U6	STORM SEWER SCHEDULE
X1-X2	CROSS SECTION

JULIA STREET, JULIA CIRCLE AND BAKER AVENUE RESURFACING ASSESSMENT DISTRICT - 2020

CITY PROJECT NO. 12717
CONTRACT NO. 8514

CONVENTIONAL SIGNS
FIELD VERIFY ALL UTILITY LOCATIONS

GAS	— G —
STORM SEWER	— ST —
SANITARY SEWER	— SAN —
WATER	— W —
BURIED ELECTRIC	— E —
OVERHEAD ELECTRIC	— OH —
POWER POLE	
ADA COMPLIANT RAMP W/ DETECTABLE WARNING FIELD	
COMBUSTIBLE FLUIDS	



PROJECT
LOCATION

PLOT SCALE: 1" = 1'

REV. DATE: 5/11/2020 8:43 AM

ORIGINATOR: CITY OF MADISON

FILE NAME: M:\DESIGN\Projects\12717\CAD\Plan Sheets\Julia_Baker_TitleSht.dwg

DATE: 5/8/2020 8:15 AM

PUBLIC IMPROVEMENT PROJECT
APPROVED

APPROVED DATE: MAY 5, 2020

BY THE COMMON COUNCIL
OF MADISON, WISCONSIN

PUBLIC IMPROVEMENT DESIGN
APPROVED BY:

Greg Fries

May 8, 2020

City Engineer

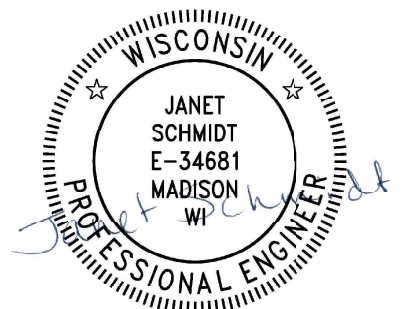
Date

STREET
DESIGNED BY:



May 8, 2020

STORM SEWER
DESIGNED BY:



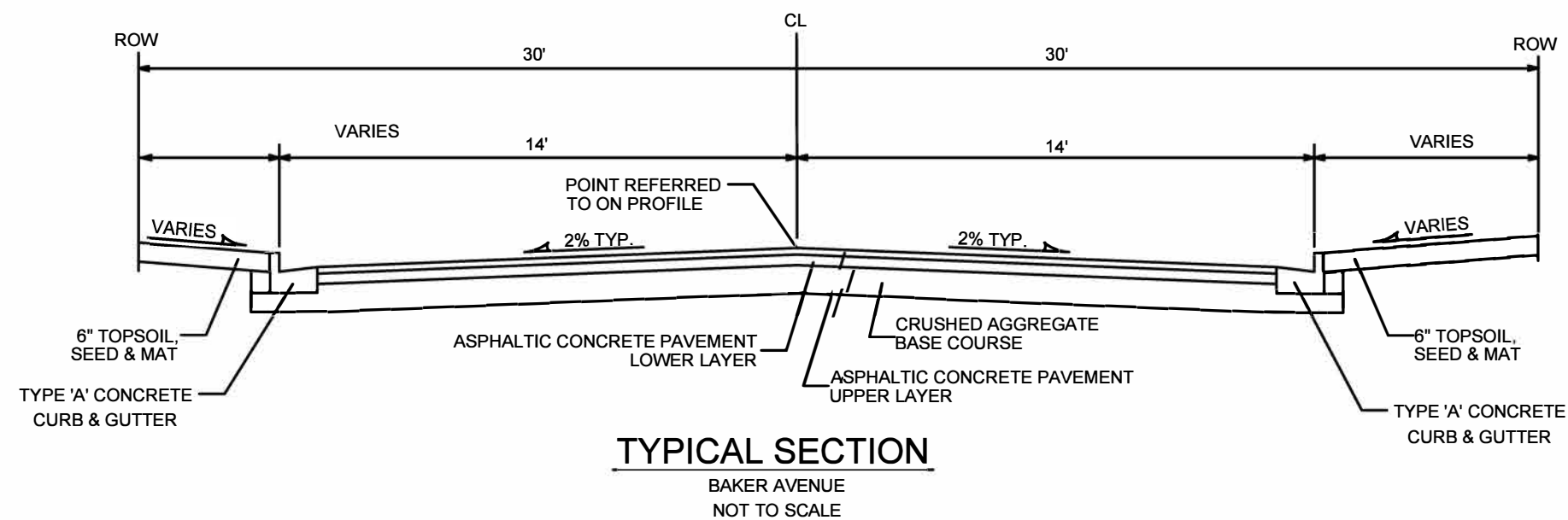
May 8, 2020

SANITARY SEWER
DESIGNED BY:



May 8, 2020

Revised Plan Issued 7/27/2020



CITY OF MADISON MINIMUM PAVEMENT DESIGN

TYPE	CRUSHED AGGREGATE BASE COURSE		ASPHALTIC CONCRETE PAVEMENT			
	LOWER LAYER GRADATION 1	UPPER LAYER GRADATION 2	LOWER LAYER		UPPER LAYER	
			TYPE	THICKNESS	TYPE	THICKNESS
A	6"	6"	4 LT 58-28 S	1.75"	4 LT 58-28 S	1.75"
B	6"	6"	3 LT 58-28 S	2.50"	4 LT 58-28 S	2.00"
C	6"	6"	3 MT 58-28 S/H	3.50"	4 MT 58-28 S/H	2.00"

NOTES:
BAKER AVENUE SHALL BE TYPE A PAVEMENT

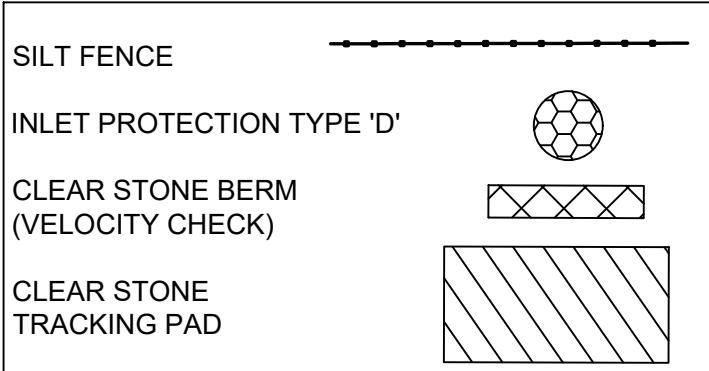
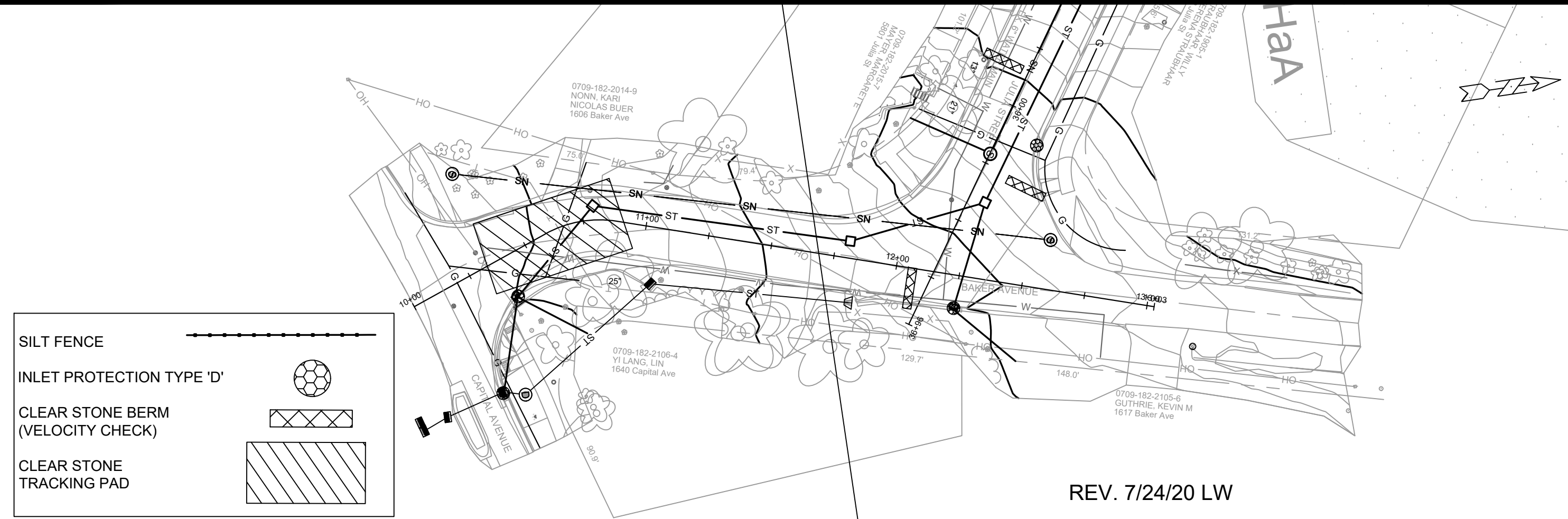
BAKER TYPICAL SECTION
 12717
 JULIA ST, JULIA CIR & BAKER AVE ASSESSMENT DISTRICT -2020
CITY OF MADISON

MADISON, WI
 CONTRACT NO: 8514

MARK	REVISION	DATE	BY

Design: By: SMS Date: 4-15-2020
 12717 Scale: D-1

12717
 D-1



REV. 7/24/20 LW

EROSION CONTROL NOTES:

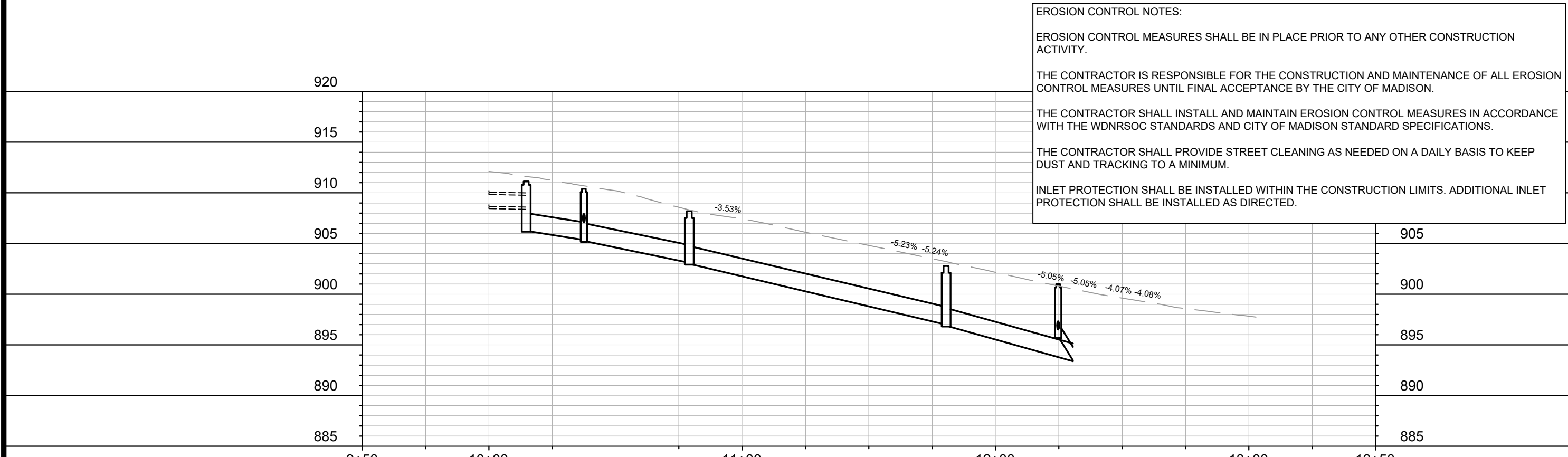
EROSION CONTROL MEASURES SHALL BE IN PLACE PRIOR TO ANY OTHER CONSTRUCTION ACTIVITY.

THE CONTRACTOR IS RESPONSIBLE FOR THE CONSTRUCTION AND MAINTENANCE OF ALL EROSION CONTROL MEASURES UNTIL FINAL ACCEPTANCE BY THE CITY OF MADISON.

THE CONTRACTOR SHALL INSTALL AND MAINTAIN EROSION CONTROL MEASURES IN ACCORDANCE WITH THE WDNR SOC STANDARDS AND CITY OF MADISON STANDARD SPECIFICATIONS.

THE CONTRACTOR SHALL PROVIDE STREET CLEANING AS NEEDED ON A DAILY BASIS TO KEEP DUST AND TRACKING TO A MINIMUM.

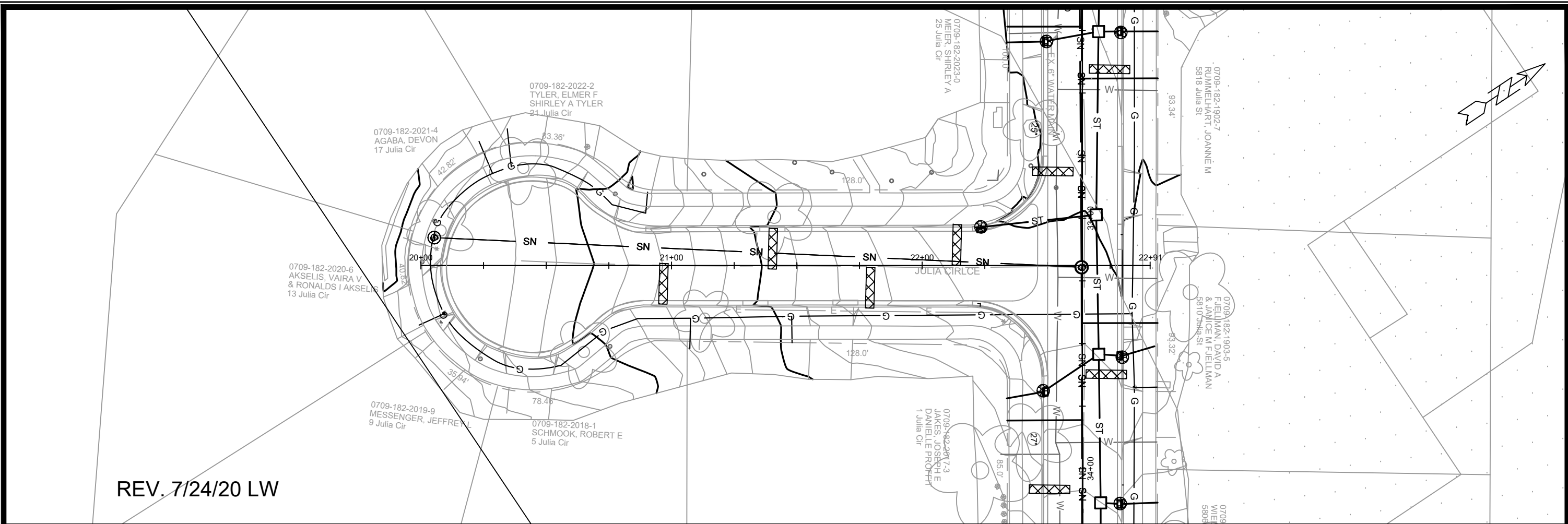
INLET PROTECTION SHALL BE INSTALLED WITHIN THE CONSTRUCTION LIMITS. ADDITIONAL INLET PROTECTION SHALL BE INSTALLED AS DIRECTED.



MARK	DATE	BY
REVISION 1	5/22/20	LAW
REVISION 2	7/24/20	LAW
DESIGNED BY	LAW	DATE: 7/24/2020 12:05 PM
SCALE:	1" = 40'	

12717
 MADISON, WI
 JULIA ST, JULIA CIR & BAKER AVE ASSESSMENT DISTRICT -2020
 CONTRACT NO.: 8514
 M:\DESIGN\Projects\12717\CAD\Storm\12717EC-LAYOUT-WETLAND GP.dwg

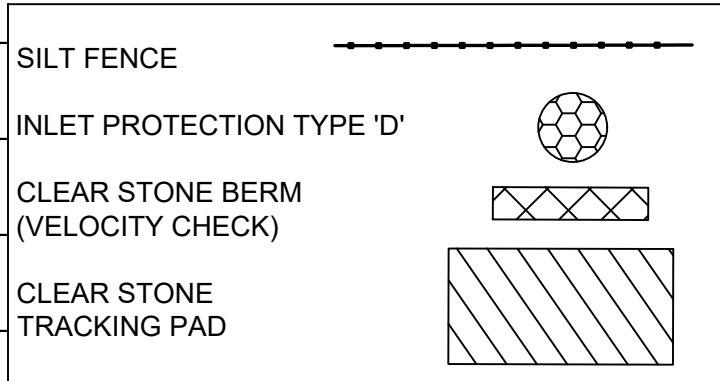




REV. 7/24/20 LW

900

900



EROSION CONTROL NOTES:

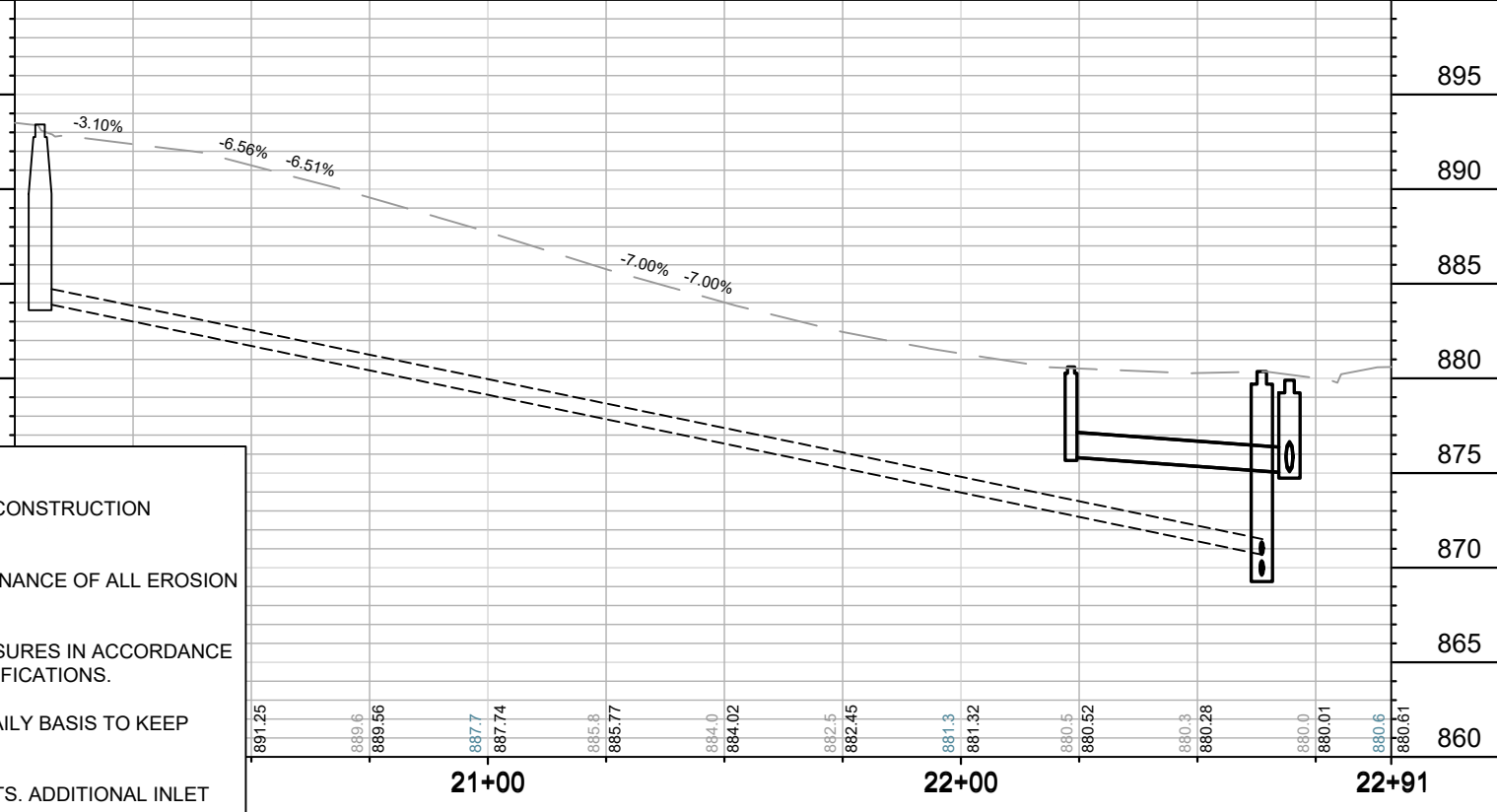
EROSION CONTROL MEASURES SHALL BE IN PLACE PRIOR TO ANY OTHER CONSTRUCTION ACTIVITY.

THE CONTRACTOR IS RESPONSIBLE FOR THE CONSTRUCTION AND MAINTENANCE OF ALL EROSION CONTROL MEASURES UNTIL FINAL ACCEPTANCE BY THE CITY OF MADISON.

THE CONTRACTOR SHALL INSTALL AND MAINTAIN EROSION CONTROL MEASURES IN ACCORDANCE WITH THE WDNR SOC STANDARDS AND CITY OF MADISON STANDARD SPECIFICATIONS.

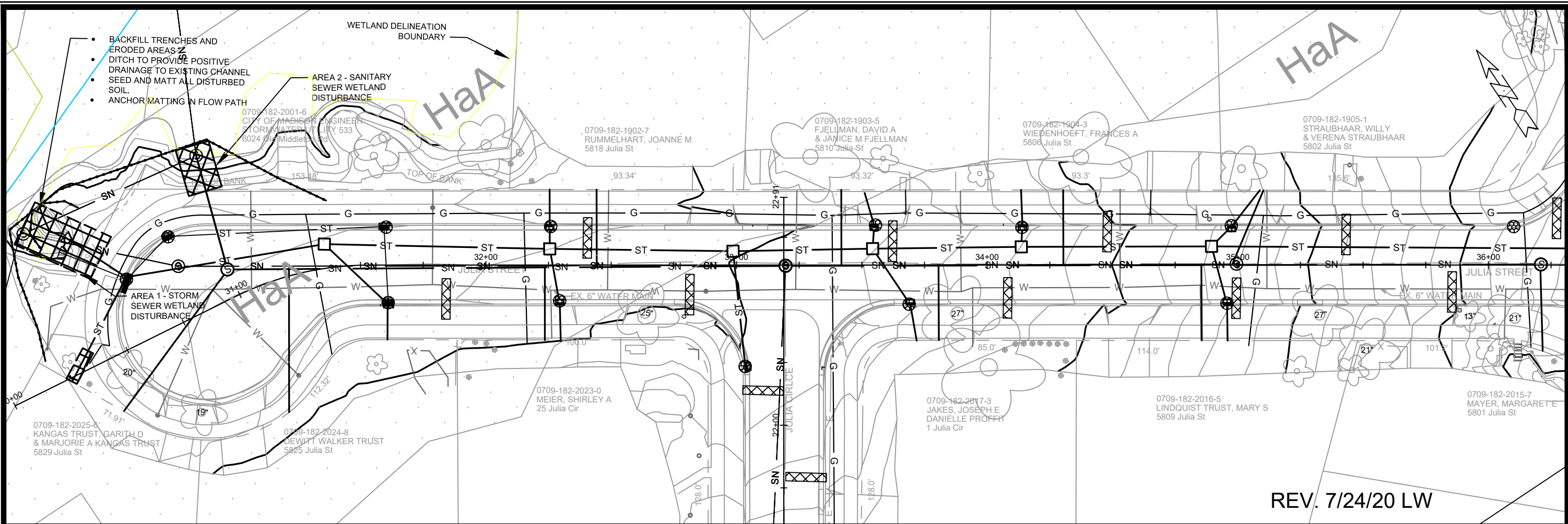
THE CONTRACTOR SHALL PROVIDE STREET CLEANING AS NEEDED ON A DAILY BASIS TO KEEP DUST AND TRACKING TO A MINIMUM.

INLET PROTECTION SHALL BE INSTALLED WITHIN THE CONSTRUCTION LIMITS. ADDITIONAL INLET PROTECTION SHALL BE INSTALLED AS DIRECTED.



891.25	889.6	889.56	887.7	887.74	885.8	885.77	884.0	884.02	882.5	882.45	881.3	881.32	880.5	880.52	880.3	880.28	880.0	880.01	880.6	880.61
			21+00								22+00									22+91

12717	12717	12717
REVISION 2	REVISION 1	REVISION 1
7/24/20	5/22/20	5/22/20
LAW	LAW	LAW
DATE	DATE	DATE
BY	BY	BY
Scale: 1" = 40'	Scale: 1" = 40'	Scale: 1" = 40'
Designed By: SMS	Date: 7/24/2020 12:06 PM	12717
12717	MADISON, WI	8514
EROSION CONTROL PLAN	JULIA ST, JULIA CIR & BAKER AVE ASSESSMENT DISTRICT -2020	CONTRACT NO:
M:\DESIGN\Projects\12717\CAD\Storm\12717\EC-LAYOUT-WETLAND GP.dwg		
12717	E-2	



REV. 7/24/20 LW

EROSION CONTROL NOTES:

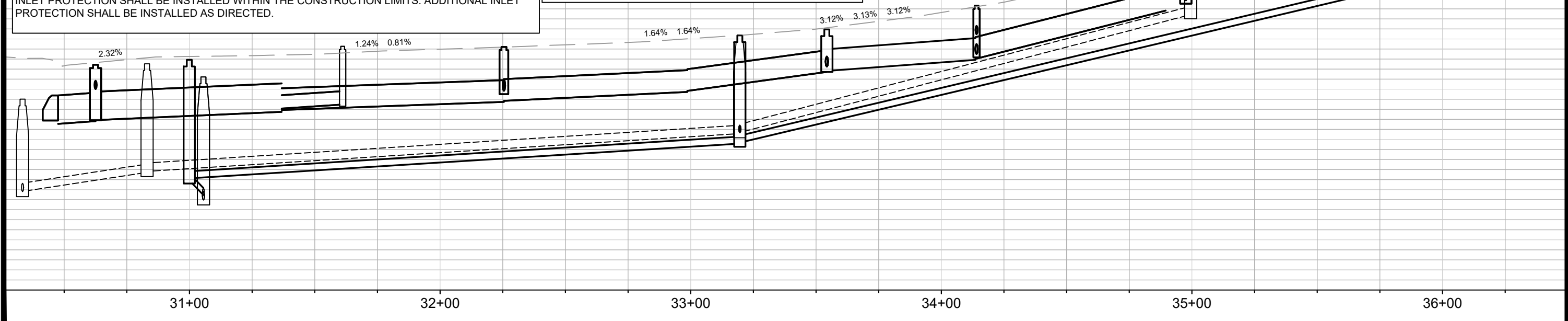
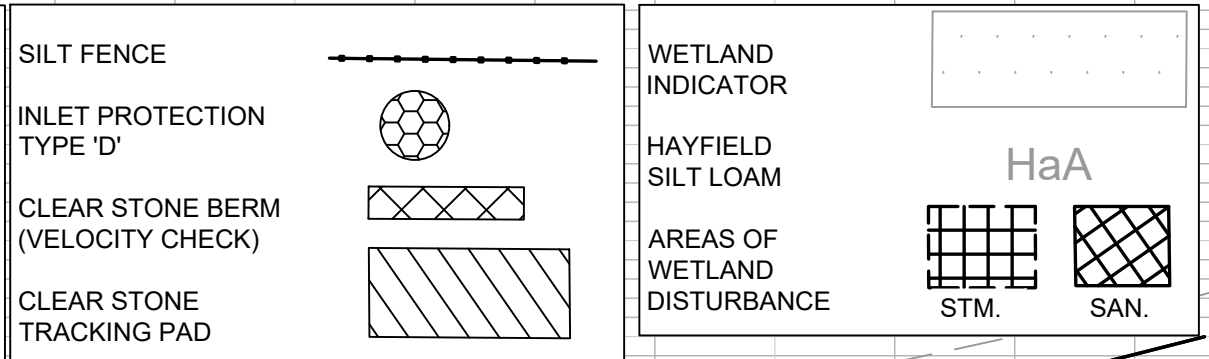
EROSION CONTROL MEASURES SHALL BE IN PLACE PRIOR TO ANY OTHER CONSTRUCTION ACTIVITY.

THE CONTRACTOR IS RESPONSIBLE FOR THE CONSTRUCTION AND MAINTENANCE OF ALL EROSION CONTROL MEASURES UNTIL FINAL ACCEPTANCE BY THE CITY OF MADISON.

THE CONTRACTOR SHALL INSTALL AND MAINTAIN EROSION CONTROL MEASURES IN ACCORDANCE WITH THE WDNR SOC STANDARDS AND CITY OF MADISON STANDARD SPECIFICATIONS.

THE CONTRACTOR SHALL PROVIDE STREET CLEANING AS NEEDED ON A DAILY BASIS TO KEEP DUST AND TRACKING TO A MINIMUM.

INLET PROTECTION SHALL BE INSTALLED WITHIN THE CONSTRUCTION LIMITS. ADDITIONAL INLET PROTECTION SHALL BE INSTALLED AS DIRECTED.



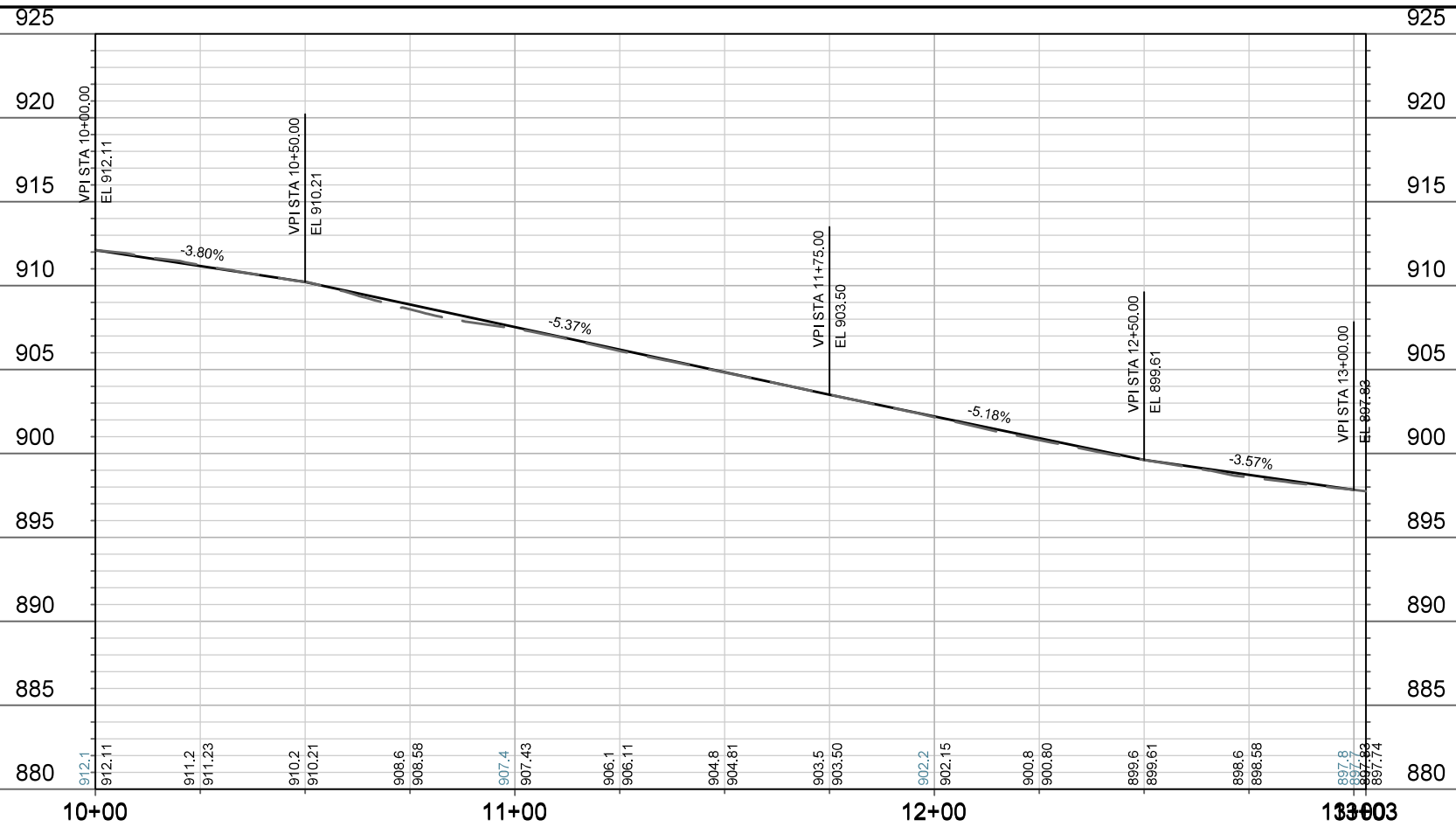
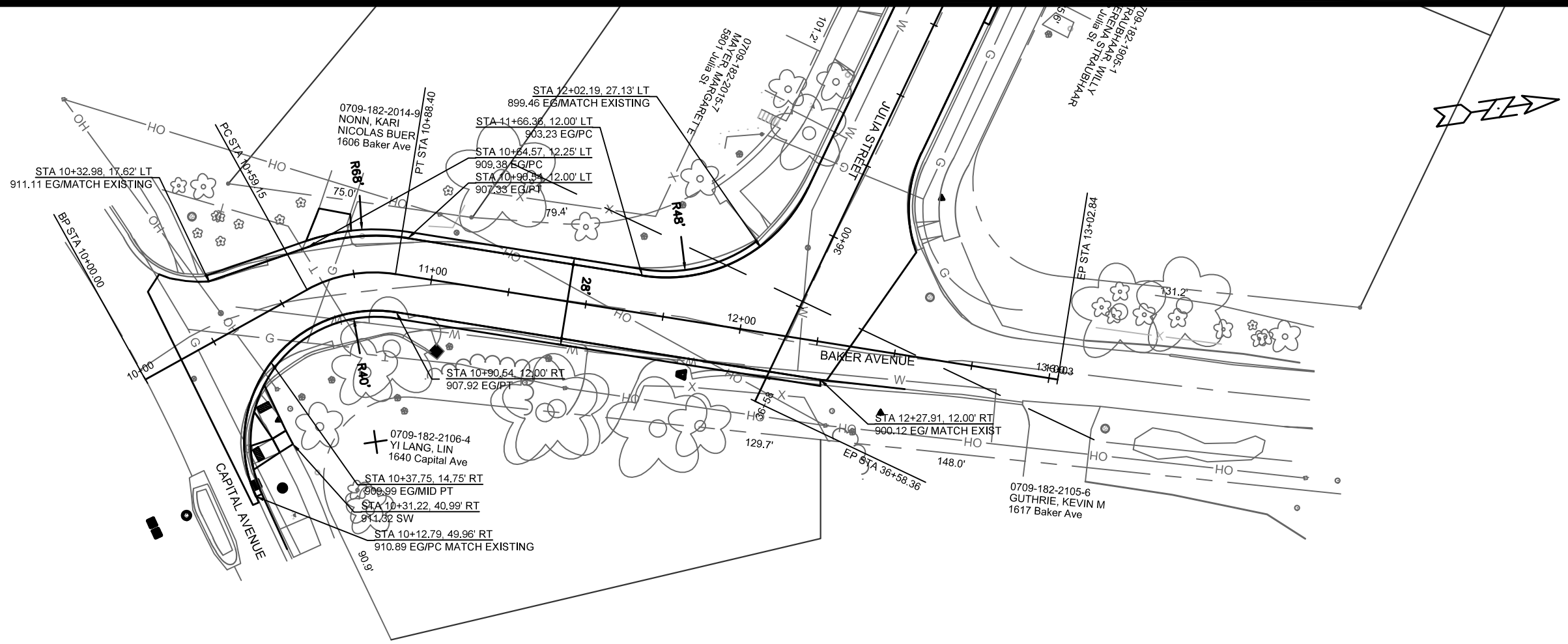
REVISION 2	7/24/20	LAW
REVISION 1	5/22/20	BY
DATE	7/24/2020	12:06 PM
DESIGNED BY	SMS	Scale: 1" = 40'
MARK	12717	

12717
MADISON, WI
CONTRACT NO: 8514

IMPACTED WETLAND AREAS
JULIA ST, JULIA CIR & BAKER AVE ASSESSMENT DISTRICT -2020
M:\DESIGN\Projects\12717\CAD\Storm\12717TEC-LAYOUT-WETLAND GP.dwg



12717
1

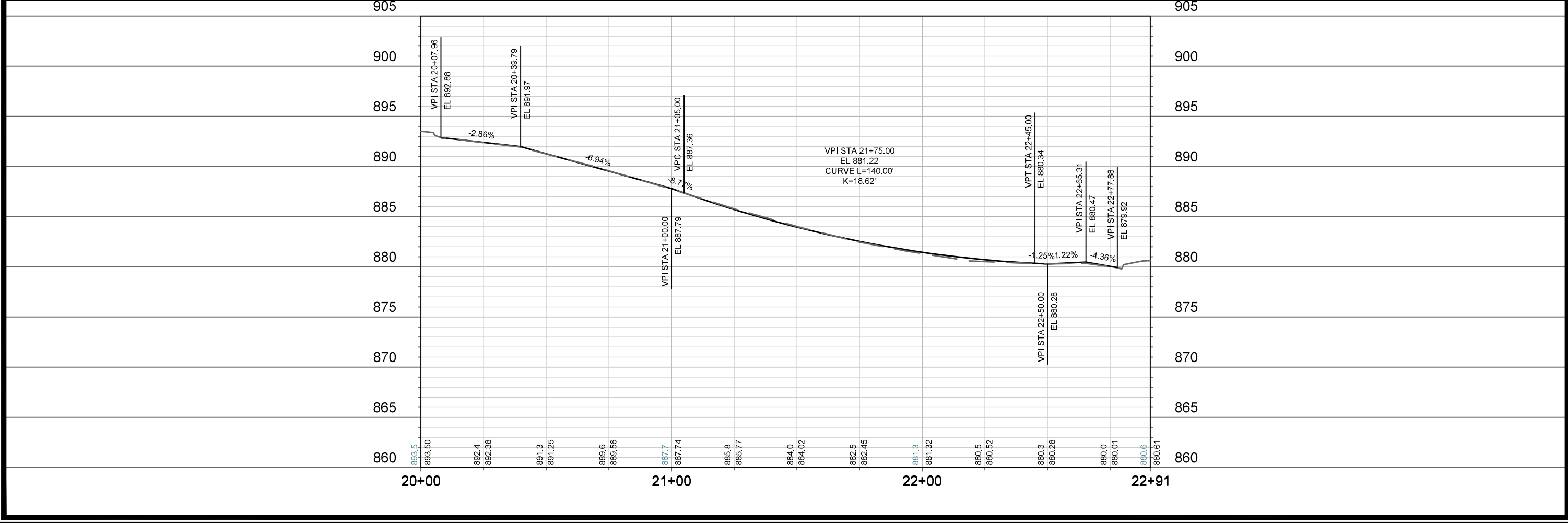
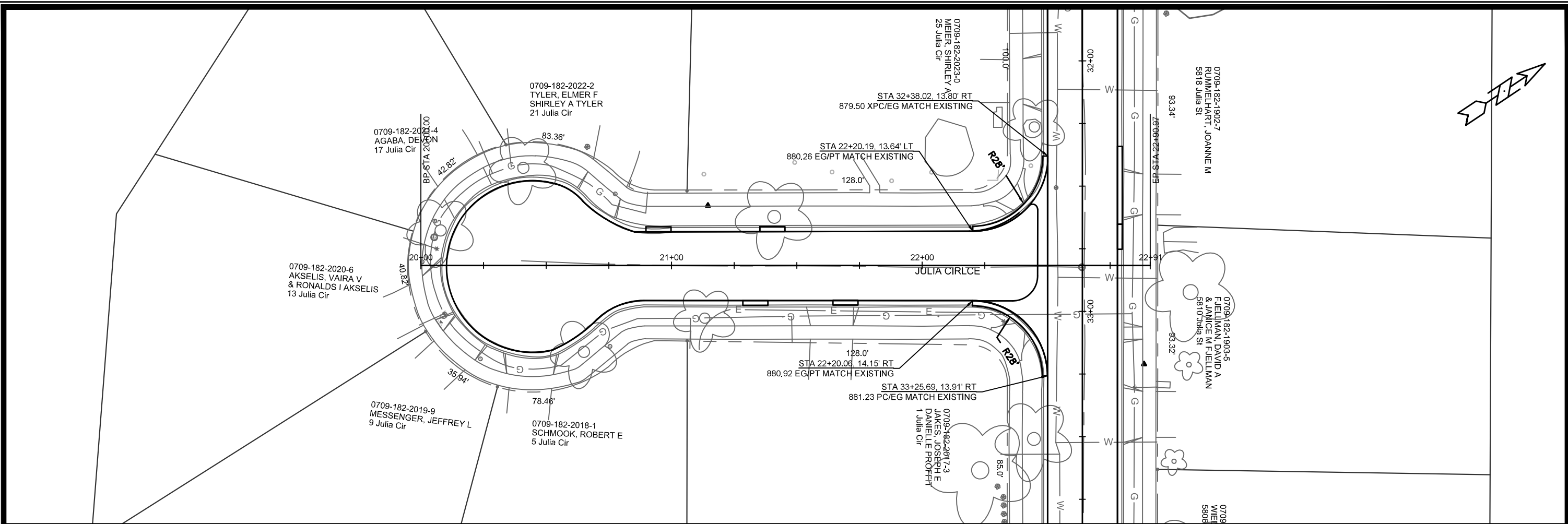


MARK	REVISION	DATE	BY

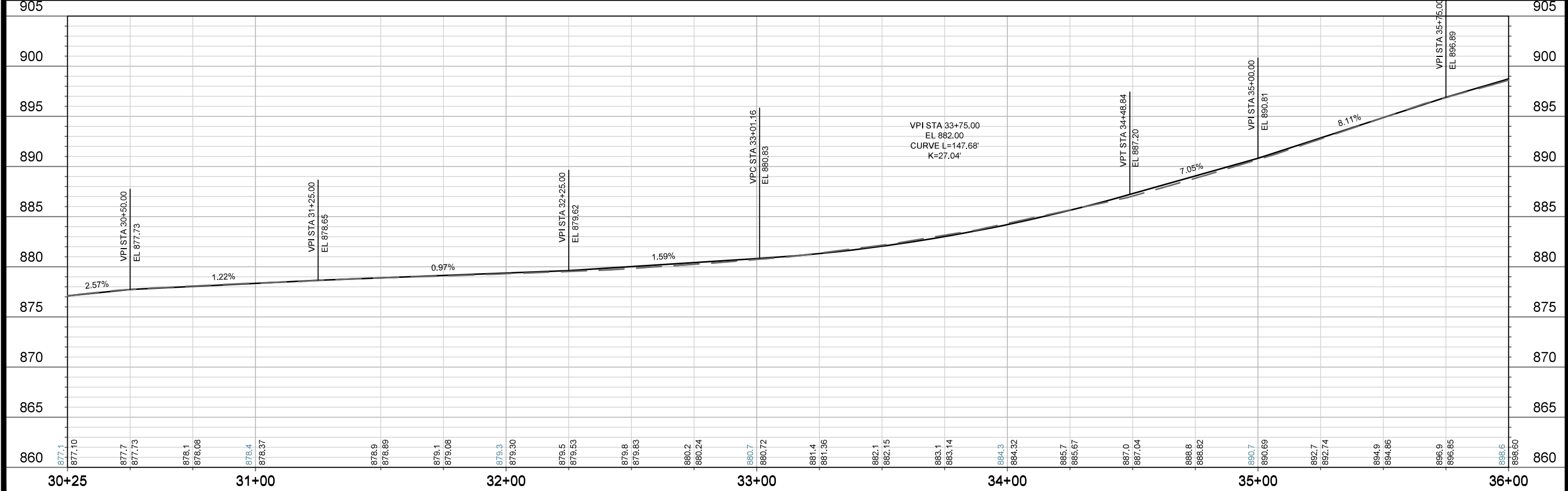
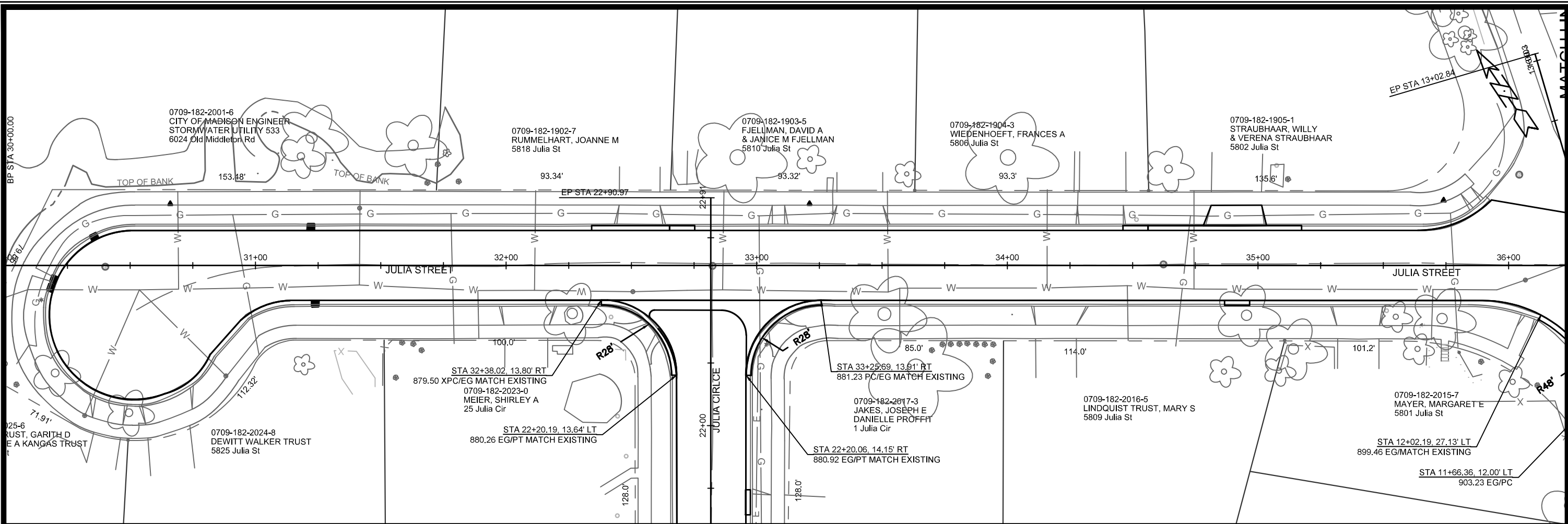
12717
 MADISON, WI
 CONTRACT NO: 8514

PLAN & PROFILE
 JULIA ST, JULIA CIR & BAKER AVE ASSESSMENT DISTRICT -2020
 M:\DESIGN\Projects\12717\CAD\Streets\12717EN-Streets_plan and profile.dwg





12717	MADISON, WI	CONTRACT NO: 8514	P-2
PLAN & PROFILE JULIA ST, JULIA CIR & BAKER AVE ASSESSMENT DISTRICT -2020			
M:\DESIGN\Projects\12717\CAD\Streets\12717EN-Streets_plan and profile.dwg			
12717 P-2			



PLAN & PROFILE

JULIA ST, JULIA CIR & BAKER AVE ASSESSMENT DISTRICT -2020

12717

M:\DESIGN\Projects\12717\CAD\Streets\12717EN-Streets_plan and profile.dwg

CITY OF MADISON WISCONSIN

12717

P-3

12717

MADISON, WI

8514

CONTRACT NO:

12717

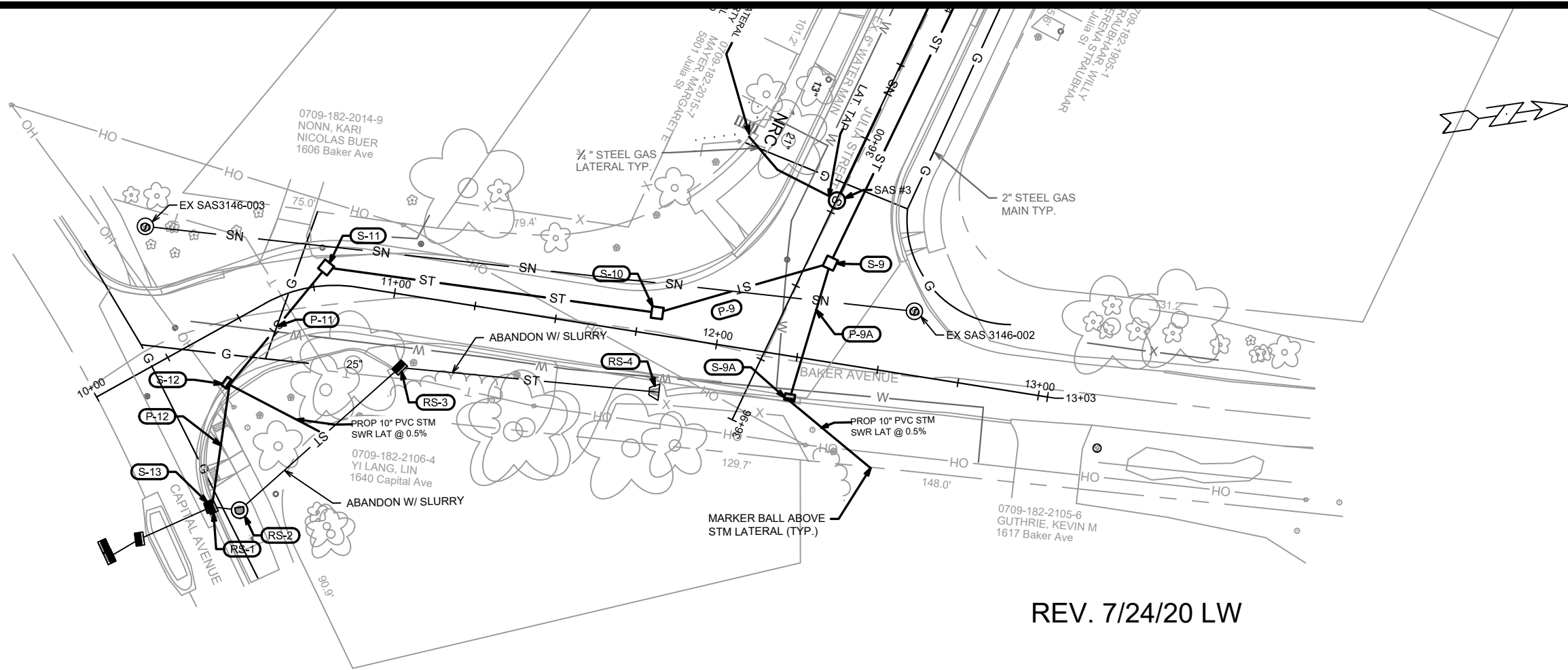
REVISION

DATE

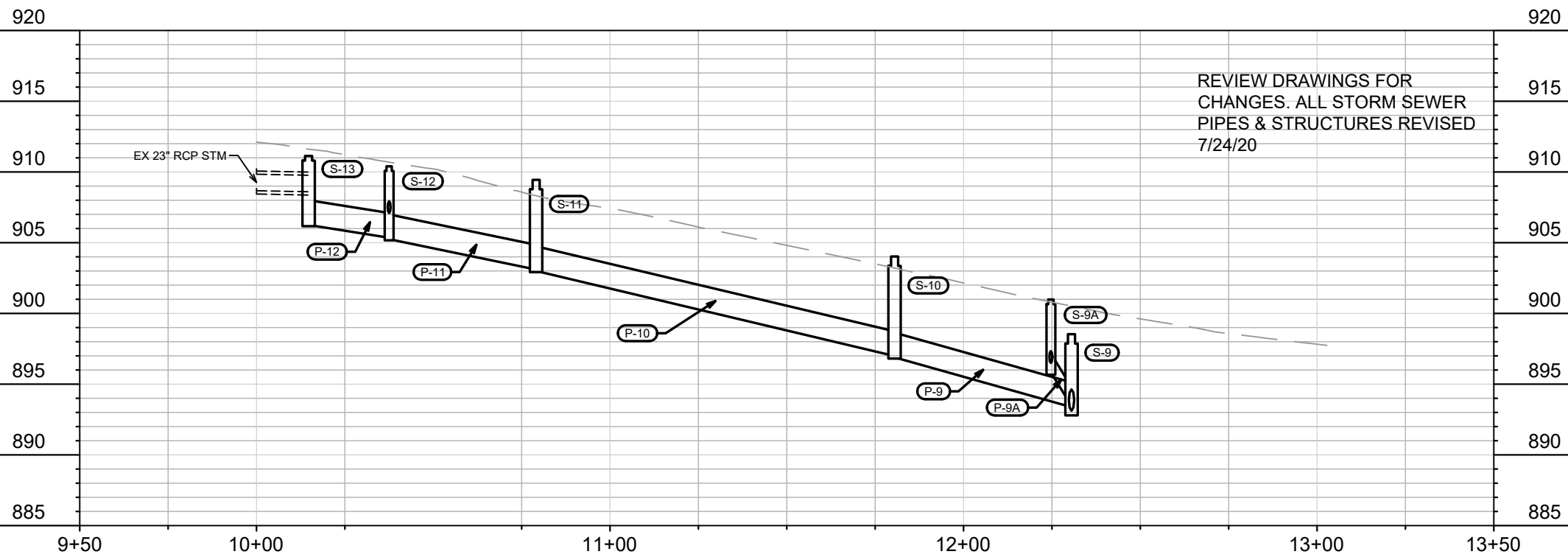
BY

Scale: 1" = 40'

P-3



REV. 7/24/20 LW



REVIEW DRAWINGS FOR
CHANGES. ALL STORM SEWER
PIPES & STRUCTURES REVISED
7/24/20

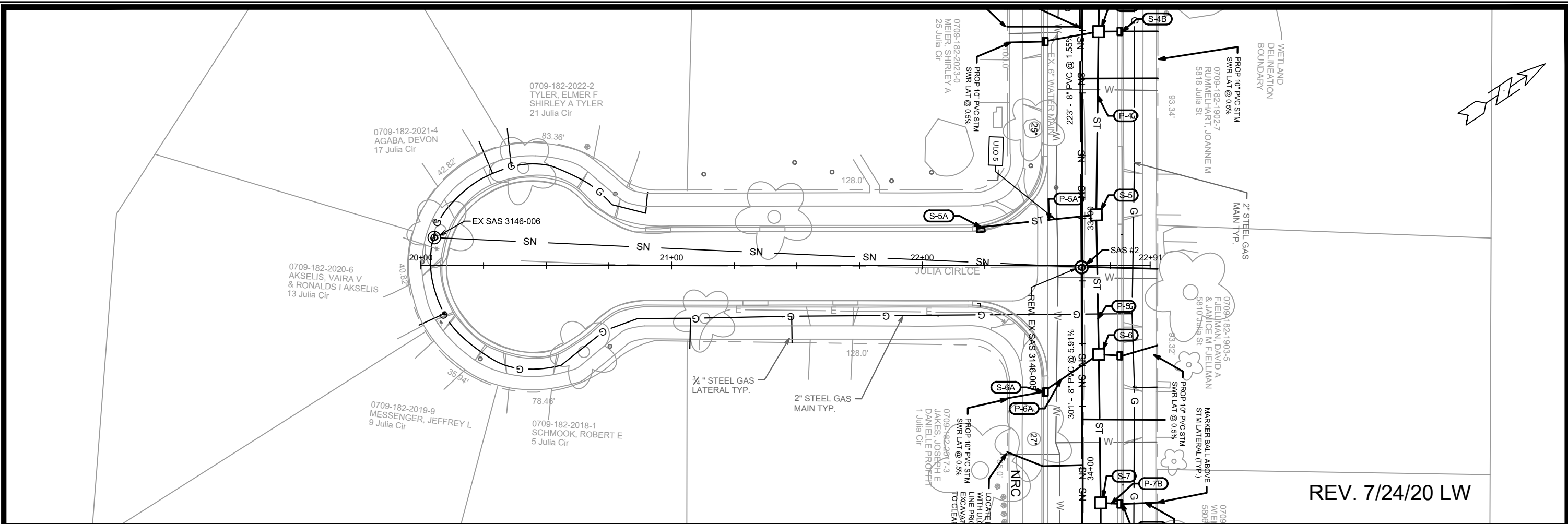
MARK	REVISION	DATE	BY
12717	REVISION 1	5/22/20	LAW
	REVISION 2	7/24/20	LAW

12717
MADISON, WI
CONTRACT NO: 8514

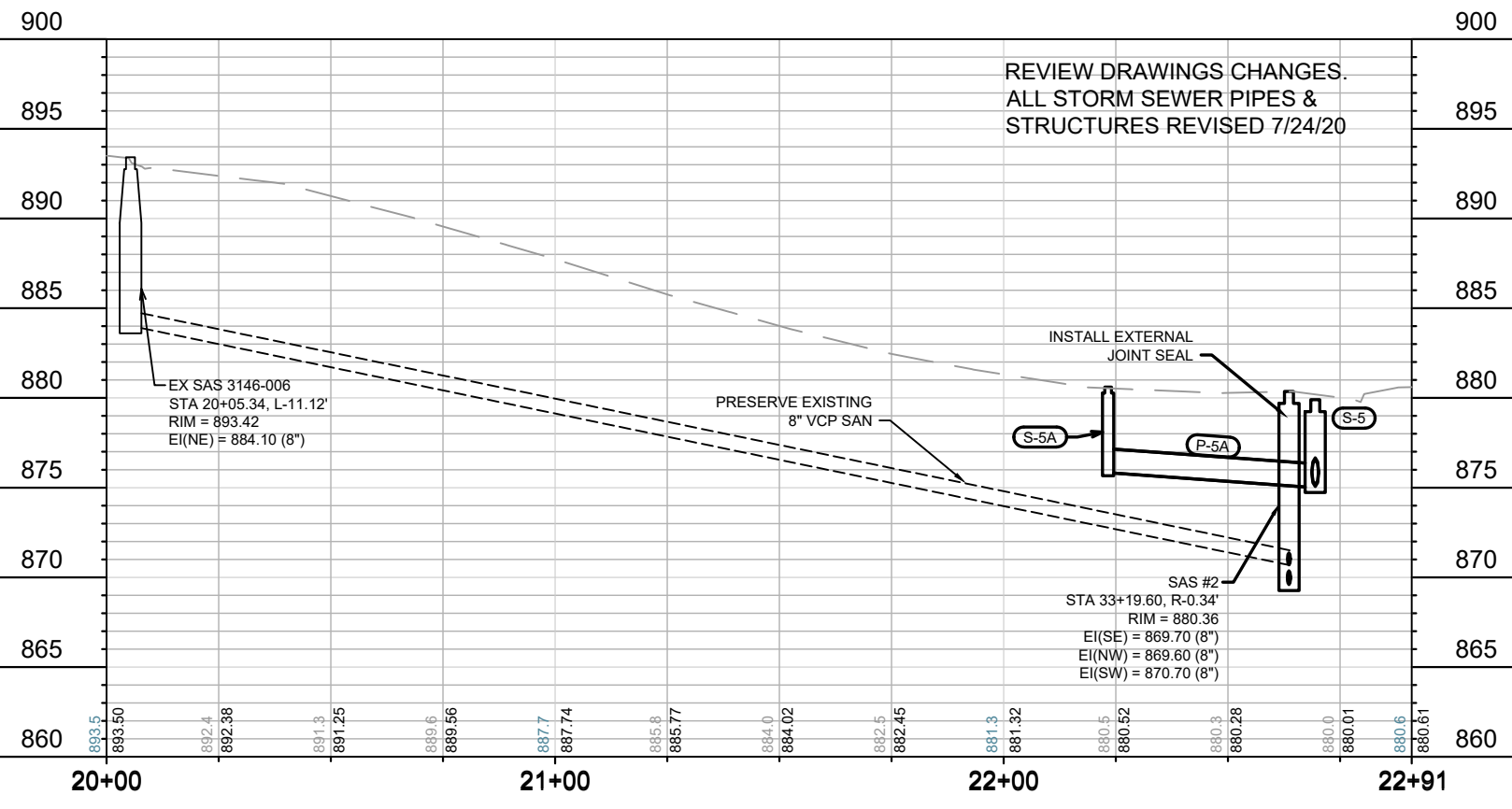
SEWER PLAN & PROFILE
JULIA ST, JULIA CIR & BAKER AVE ASSESSMENT DISTRICT -2020
M:\DESIGN\Projects\12717\CAD\Storm\12717SWR-Pipe Network - LAYOUT - AD-3.dwg



12717
U-1



REV. 7/24/20 LW



12717	12717	12717
MADISON, WI	MADISON, WI	MADISON, WI
CONTRACT NO: 8514	CONTRACT NO: 8514	CONTRACT NO: 8514
DESIGNED BY: SMS	DATE: 7/24/2020	SCALE: 1" = 40'
MARK	REVISION	DATE
REVISION 1	5/22/20	LAW
REVISION 2	7/24/20	LAW

SEWER PLAN & PROFILE

JULIA ST, JULIA CIR & BAKER AVE ASSESSMENT DISTRICT -2020

M:\DESIGN\Projects\12717\CAD\Storm\12717SWR-Pipe Network - LAYOUT - AD-3.dwg

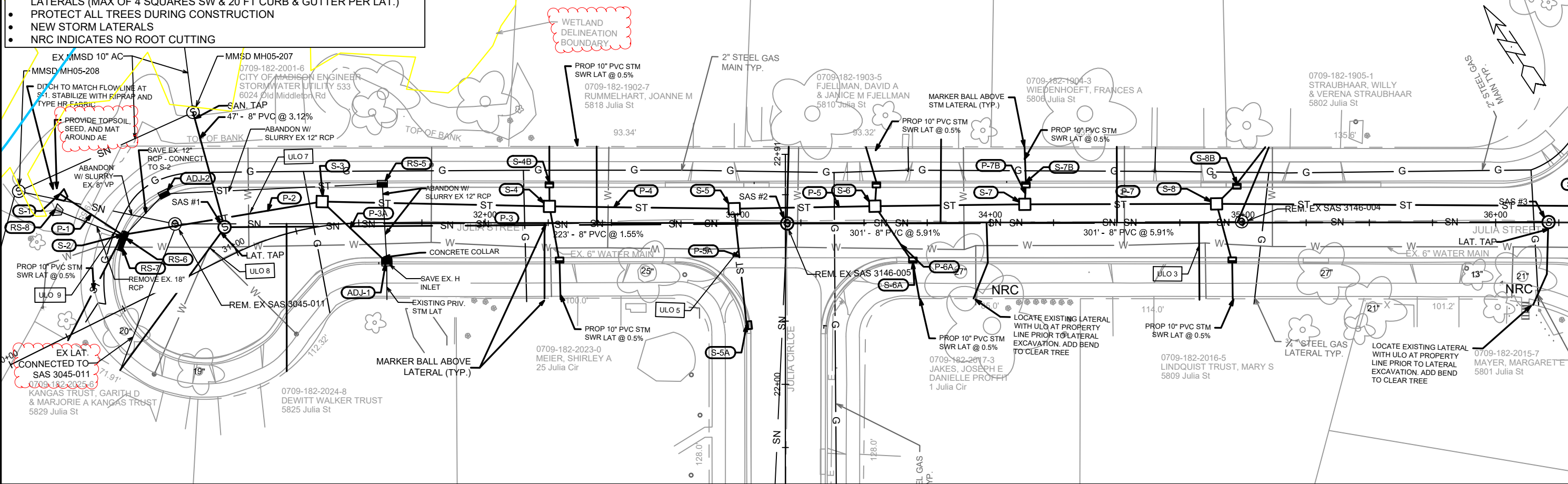
CITY OF MADISON WISCONSIN

12717

U-2

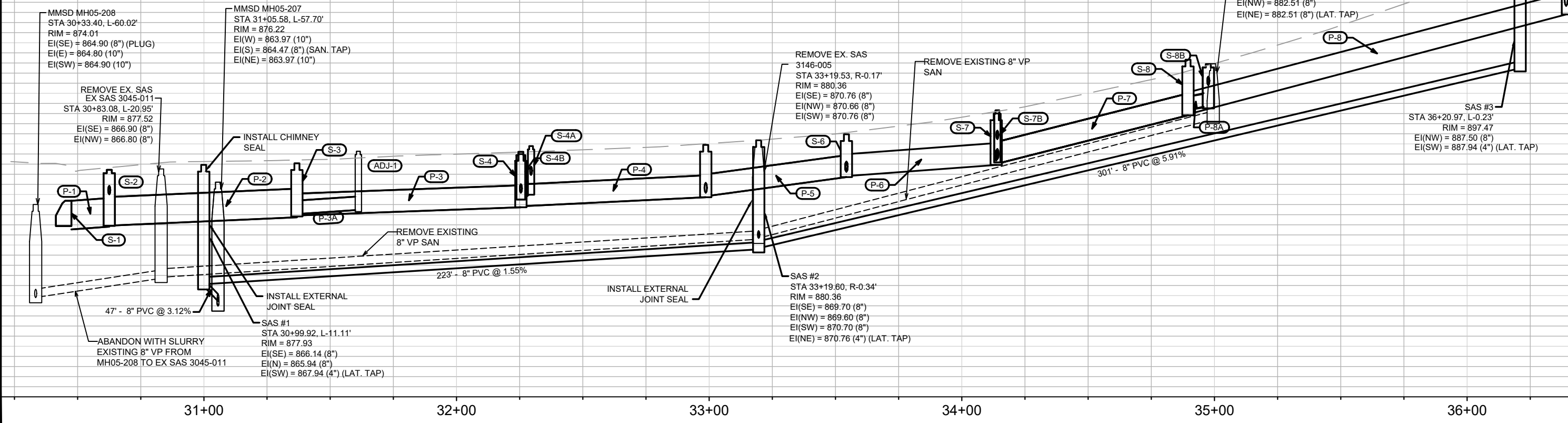
- GENERAL NOTES:**
- CONTRACTOR SHALL REM. & REP. SIDEWALK & CURB AS NEEDED FOR LATERALS (MAX OF 4 SQUARES SW & 20 FT CURB & GUTTER PER LAT.)
 - PROTECT ALL TREES DURING CONSTRUCTION
 - NEW STORM LATERALS
 - NRC INDICATES NO ROOT CUTTING

REV. 7/24/20 LW



NOTE: CONTRACTOR SHALL CONTACT RAY SCHNEIDER (608) 347-3628 OR RAYS@MADSEWER.ORG, FIVE DAYS PRIOR TO MAKING THE CONNECTION TO MMSD MH05-207 TO ARRANGE FOR INSPECTION AND PERMITTING OF THE CONNECTION. CONTRACTOR SHALL BE RESPONSIBLE FOR THE PERMIT APPLICATION FEE (\$1,150.00)

REVIEW DRAWINGS CHANGES. ALL STORM SEWER PIPES & STRUCTURES REVISED 7/24/20



REVISION 2	LAW	7/24/20	DATE	1" = 40'
REVISION 1	LAW	5/22/20	DATE	
MARK	DATE	7/24/2020 2:16 PM	DATE	
12717				

12717
 MADISON, WI
 JULIA ST, JULIA CIR & BAKER AVE ASSESSMENT DISTRICT -2020
 CONTRACT NO.: 8514
 M:\DESIGN\Projects\12717\CAD\Storm\12717SWR-Pipe Network - LAYOUT - AD-3.dwg



12717
 U-3

SANITARY SEWER SCHEDULE

-PLAN REVISION CHANGES INDICATED W/ ASTERISK
- SAS #2 NOTE UPDATED

JULIA ST/JULIA CIR./BAKER AVE.

SHEET NO.

PROJECT NO. 12717

U-4

SANITARY SEWER SCHEDULE

REVISED 5/24/20 LW

CITY OF MADISON

PROPOSED SANITARY STRUCTURES

SAS NO.	STATION	LOCATION (OFFSET)	TOP OF CASTING	E.I.	DEPTH (FT)	NOTES
STREET NAME						
JULIA STREET						
SAS#1	30+99.92	LT-11.11	877.93	865.94	11.99	[1][2]
*SAS#2	33+19.60	RT-0.34	880.36	869.60	10.76	[2]
SAS#3	36+20.97	LT-0.23	897.47	887.50	9.97	-

PROPOSED SANITARY PIPES

FROM (DNSTM)	TO (UPSTM)	DWNSTRM E.I.	UPSTRM E.I.	PLAN LGTH (FT)	SLOPE (%)	PIPE SIZE	PVC TYPE	NOTES
EX. MH05-207	SAS#1	864.47	865.94	47	3.12%	8"	SDR-35	[3]
SAS#1	SAS#2	866.72	869.60	223	1.29%	8"	SDR-35	-
SAS#2	SAS#3	869.70	887.50	301	5.91%	8"	SDR-35	-

SANITARY STRUCTURE REMOVALS

SAS NO.	STATION	LOCATION (OFFSET)	TOP OF CASTING	E.I.	DEPTH (FT)	NOTES
JULIA STREET						
EX SAS 3045-011	30+83.08	LT-20.95	877.52	866.80	10.72	-
EX SAS 3146-005	33+19.53	RT-0.17	880.36	870.66	9.70	-
EX SAS 3146-004	34+99.51	LT-0.42	887.92	882.51	5.41	-

SANITARY PIPE REMOVALS

FROM (DNSTM)	TO (UPSTM)	PLAN LGTH (FT)	PAID (Y/N)	PLAN (PAY) LGTH (FT)	PIPE SIZE	PIPE TYPE	NOTES
EX. MH05-208	EX SAS 3045-011	63	Y	63	8"	VCP	ABANDON W/ SLURRY
EX SAS 3045-011	EX SAS 3146-005	242	N	0	8"	VCP	-
EX SAS 3146-005	EX SAS 3146-004	180	N	0	8"	VCP	-

NOTES:

[1] INSTALL INTERNAL CHIMNEY SEAL IN ACCORDANCE WITH S.D.D. 5.7.17

[2] INSTALL EXTERNAL SEWER ACCESS STRUCTURE JOINT SEAL IN ACCORDANCE WITH S.D.D. 5.7.2

[3] CONTRACTOR SHALL NOTIFY RAY SCHNEIDER (608) 347-3628 OR RAYS@MADSEWER.ORG FIVE DAYS PRIOR TO MAKING THE CONNECTION TO EX. MMSD MH05-207 TO ARRANGE FOR INSPECTION AND PERMITTING. CONTRACTOR SHALL BE RESPONSIBLE FOR THE PERMIT APPLICATION FEE (\$1,150)

STORM SEWER SCHEDULE

JULIA ST/JULIA CIR./BAKER AVE.

SHEET NO.

PROJECT NO. 12717

U-5

-PLAN REVISION CHANGES INDICATED W/ SINGLE ASTERISK *
-REVIEW ALL SECTIONS FOR CHANGES

STORM SEWER SCHEDULE
REVISED 7/22/20 LW

CITY OF MADISON

PROPOSED STORM STRUCTURES

STRUC. NO.	STATION	LOCATION (OFFSET)	TYPE	TOP OF CASTING	E.I.	DEPTH	NOTES
STREET NAME							
JULIA STREET							
S-1	30+47.55	LT-51.84	24" APRON END	874.38	-	-	w/ GATE [4]
S-2*	30+62.54	LT-26.31	4x4 SAS	877.44	872.24	5.20	w/ R-3067-700VB (LP) [1] FP
S-3*	31+36.81	LT-9.59	4x4 SAS	878.20	873.16	5.04	w/R-1550-0054 FP
S-4	32+25.48	LT-6.45	4x4 SAS	879.00	874.07	4.93	w/R-1550-0054
S-4A*	32+29.50	RT-15.78	H INLET	879.78	875.31	4.47	w/ R-3067-7004v [1]
S-4B*	32+25.46	LT-15.97	H INLET	879.27	874.84	4.43	w/ R-3067-7004v [1]
S-5	32+98.64	LT-5.53	4x4 SAS	879.90	875.06	4.84	w/R-1550-0054
S-5A*	22+23.28	LT-15.33	H INLET	880.60	876.00	4.60	w/ R-3067-7004v
S-6*	33+54.32	LT-6.53	4x4 SAS	880.96	877.05	3.91	w/R-1550-0054
S-6A*	33+69.34	RT-15.78	H INLET	881.99	878.50	3.49	w/ R-3067-7004v [1]
S-6B*	33+54.91	LT-15.93	H INLET	881.22	877.67	3.55	w/ R-3067-7004v [1]
S-7	34+13.62	LT-7.27	4x4 SAS	883.01	878.25	4.76	w/R-1550-0054
S-7B	34+14.06	LT-15.93	H INLET	883.34	878.50	4.84	w/ R-3067-7004v [1]
S-8*	34+89.52	LT-7.44	4x4 SAS	887.07	883.16	3.91	w/R-1550-0054
S-8A*	34+95.73	RT-15.71	H INLET	888.04	883.85	4.19	w/ R-3067-7004v [1]
S-8B*	34+95.73	RT-15.45	H INLET	887.88	883.85	4.03	w/ R-3067-7004v [1]

JULIA CIRCLE

S-5A*	22+23.23	LT-15.33	H INLET	880.60	876.00	4.60	w/ R-3067-7004v
-------	----------	----------	---------	--------	--------	------	-----------------

BAKER AVE

S-9A*	12+24.71	RT-13.50	H INLET	900.99	896.00	4.99	w/ R-3067-7004v [1]
S-9	36+39.21	LT-6.59	3x3 SAS	898.53	893.13	5.40	w/R-1550-0054
S-10	11+80.50	LT-6.72	3x3 SAS	902.78	897.14	5.64	w/R-1550-0054
S-11	10+79.09	LT-5.60	3x3 SAS	908.19	903.25	4.94	w/R-1550-0054
S-12*	10+37.51	RT-16.50	H INLET	909.89	905.50	4.39	w/ R-3067-7004v [1]
S-13*	10+14.73	RT-46.45	H INLET	911.13	906.50	4.63	w/ R-3067-7004v

STORM STRUCTURE ADJUSTMENTS

STRUC. NO.	STATION	LOCATION (OFFSET)	TYPE	EX. TOC	PROP. TOC	DIF. (FT)	NOTES
JULIA STREET							
ADJ-1	31+61.06	RT-15.15	INLET	878.64	878.64	0.00	[2][3]
ADJ-2	30+84.44	LT-33.57	INLET	874.91	874.91	0.00	[3][5]

SPECIFIC NOTES:

- [1] EXTEND PRIVATE STORM SEWER LATERAL FROM STRUCTURE TO PROPERTY LINE
- [2] EXISTING STORM STRUCTURE TO BE CONNECTED TO NEW PIPE
- [3] PAID AS BID ITEM NUMBER 50499 (CONCRETE COLLAR)
- [4] 24" AE GRATE CONSTRUCTED & INSTALLED IN ACCORDANCE WITH S.D.D. 5.6.1
- [5] PROTECT EX. PIPE & STRUCTURE, RECONNECT TO NEW STRUCTURE S-2

STANDARD NOTES:

- KOR N SEAL BOOTS OR EQUIVALENT SHALL BE USED FOR ALL PIPE CONNECTIONS TO INLETS. IN ADDITION, KOR N SEAL BOOTS SHALL BE REQUIRED FOR ANY TYPE II PIPE CONNECTION TO SAS STORM STRUCTURES. CONCRETE COLLARS OR KOR N SEAL MAY BE USED FOR RCP OR HERCP CONNECTIONS TO SAS STORM STRUCTURES.
- PLAN LENGTH (PAY LENGTH) IS FROM CENTER OF STRUCTURE TO CENTER OF STRUCTURE. PIPE LENGTH IS ACTUAL LENGTH OF PIPE FROM STRUCTURE WALL TO STRUCTURE WALL. SLOPE CALCULATED USING PIPE LENGTH.
- ALL REBAR FOR FIELD POURED STRUCTURES SHALL BE EPOXY COATED. ANY EXPOSED STEEL SHALL BE TOUCHED UP OR RECOATED
- ALL FIELD POURED (FP) SAS STORM STRUCTURES SHALL BE CONSTRUCTED IN ACCORDANCE WITH STANDARD DETAIL DRAWING 5.7.3. ALL PRECAST SAS STORM STRUCTURES SHALL BE CONSTRUCTED IN ACCORDANCE WITH STANDARD DETAIL DRAWING 5.7.5.

PROPOSED STORM PIPES

PIPE NO.	FROM (DNSTM)	TO (UPSTM)	DISCH. E.I.	INLET E.I.	PLAN (PAY) LGTH (FT)	PIPE LGTH (FT)	SLOPE	PIPE SIZE	TYPE	NOTES
P-1	S-1	S-2	871.96	872.24	29	27	1.02%	24"	RCP	
P-2*	S-2	S-3	872.34	873.16	81	76	1.08%	24"	TYPE II STM	
P-3*	S-3	S-4	873.26	874.07	90	85	0.95%	18"	TYPE II STM	
P-3A*	S-3	ADJ-1	873.26	873.64	35	32	1.20%	12"	TYPE II STM [2]	
P-4*	S-4	S-5	874.17	875.06	73	69	1.29%	18"	TYPE II STM	
P-4A*	S-4	S-4A	874.27	875.31	23	19	5.48%	12"	TYPE II STM	
P-4B*	S-4	S-4B	874.27	874.84	13	9	6.38%	12"	TYPE II STM	
P-5*	S-5	S-6	875.16	877.05	71	67	2.82%	18"	TYPE II STM	
P-6*	S-6	S-7	877.15	878.25	44	40	2.74%	18"	TYPE II STM	
P-6A*	S-6	S-6A	877.15	878.50	23	19	7.01%	12"	TYPE II STM	
P-7A*	S-7	S-7A	878.35	879.92	34	31	5.12%	12"	TYPE II STM	
P-7*	S-7	S-8	878.35	883.16	76	72	6.71%	15"	TYPE II STM	
P-8*	S-8	S-9	883.26	893.13	150	146	6.76%	15"	TYPE II STM	
P-8B*	S-8	S-8B	883.50	883.85	12	8	4.43%	12"	TYPE II STM	
*NEW PRIVATE STORM LATERALS										
P-9A*	S-9	S-9A	893.63	896.00	45	41	5.72%	12"	TYPE II STM	
P-9*	S-9	S-10	893.63	897.14	55	52	6.70%	15"	TYPE II STM	
P-10*	S-10	S-11	897.24	903.25	103	100	6.03%	15"	TYPE II STM	
P-11*	S-11	S-12	903.35	905.50	47	44	4.93%	15"	TYPE II STM	
P-12*	S-12	S-12	905.60	906.50	37	34	2.62%	15"	TYPE II STM	

- APPROXIMATE DISCHARGE E.I. GIVEN, ADJUST E.I. AND PIPE SLOPE IN THE FIELD.
- TOP OF CASTING GRADE GIVEN IS THE TOP OF CURB FOR INLET STRUCTURES AND THE FLOWLINE OF THE CLOSED
- ALL REINFORCED CONCRETE PIPES TO BE CLASS III UNLESS OTHERWISE NOTED.
- SURVEYOR TO CONFIRM THAT ALL INLET STATION / OFFSETS LINE UP WITH PROPOSED CURB AND GUTTER.
- ALL STRUCTURES CALLED OUT AS FIELD POURED SHALL BE FIELD POURED. ALL OTHER STRUCTURES (NOT INDICATED AS FIELD POURED) SHALL BE SUBMITTED TO CITY ENGINEERING FOR APPROVAL IF PRECAST STRUCTURES ARE PREFERRED. CONTACT LUCAS WARDELL OF CITY ENGINEERING AT (608)243-5894 FOR PRECAST APPROVALS, FAX SHOP DRAWINGS TO (608)264-9275, OR EMAIL SHOP DRAWINGS TO LWARDELL@CITYOFMADISON.COM.

STORM SEWER SCHEDULE

JULIA ST/JULIA CIR./BAKER AVE.	SHEET NO.
PROJECT NO. 12717	U-6
STORM SEWER SCHEDULE	
REVISED 7/22/20 LW	
CITY OF MADISON	

-PLAN REVISION CHANGES INDICATED W/ ASTERISK
 - REVIEW ULO'S FOR CHANGES (QUANTITY REDUCTION)

STORM STRUCTURE REMOVALS

STRUC. ID NO.	STATION	LOCATION (OFFSET)	TOP OF CASTING	E.I.	DEPTH	NOTES
JULIA STREET						
RS-8	30+43.06	LT-47.13	873.91	873.91	0.00	-
RS-6	30+62.52	LT-25.45	877.37	874.32	3.05	-
RS-7	30+63.17	LT-27.52	877.41	874.32	3.09	-
RS-5	31+59.31	LT-15.41	877.93	875.87	2.06	-
BAKER AVE						
RS-1	10+14.54	RT-46.57	911.20	908.52	2.68	-
RS-2	10+21.51	RT-51.68	911.10	906.30	4.80	-
RS-3	11+05.11	RT-22.31	906.77	903.92	2.85	-
RS-4	11+84.86	RT-17.29	902.68	901.91	0.77	-

STORM PIPE REMOVALS/ABANDONMENTS

FROM (DNSTM)	TO (UPSTM)	LENGTH (FT)	PAID (Y/N)	PLAN (PAY) LGTH (FT)	SIZE DIA (IN)	PIPE TYPE	NOTES
RS-9	RS-7		29 Y		29 18"	RCP	REMOVE STM PIPE
RS-7	RS-6		22 N		0 12"	RCP	REMOVE STM PIPE
ADJ-2	RS-5		87 Y		87 12"	RCP	ABAN W/ SLURRY
RS-5	ADJ-1		29 N		29 12"	RCP	ABAN W/ SLURRY
RS-2	RS-1		11 Y		11 14"x23"	HERCP	REMOVE STM PIPE
RS-3	RS-2		64 Y		64 12"	CMP	ABAN W/ SLURRY
RS-4	RS-3		78 Y		78 15"	RCP	ABAN W/ SLURRY

UTILITY LINE OPENINGS

ULO NO.	STATION	LOCATION (OFFSET)	TYPE	TOP ELEV.	NOTES
JULIA STREET					
*ULO-1	36+48.68	RT-4.22	WATER	-----	REMOVED
*ULO-2	35+11.03	LT-0.71	WATER	-----	REMOVED
ULO 3	34+82.81	RT-8.66	WATER	-	-
*ULO-4	34+30.52	RT-8.94	WATER	-----	REMOVED
ULO 5	33+00.17	RT-10.22	WATER	-	-
*ULO-6	31+52.99	RT-8.60	WATER	-----	REMOVED
ULO 7	30+91.10	LT-6.64	WATER	-	-
ULO 8	31+09.90	LT-12.16	WATER	-	-
ULO 9	30+61.01	LT-29.02	GAS	-	-

*5 ADDITIONAL UNDISTRIBUTED ULOs INCLUDED IN CONTRACT

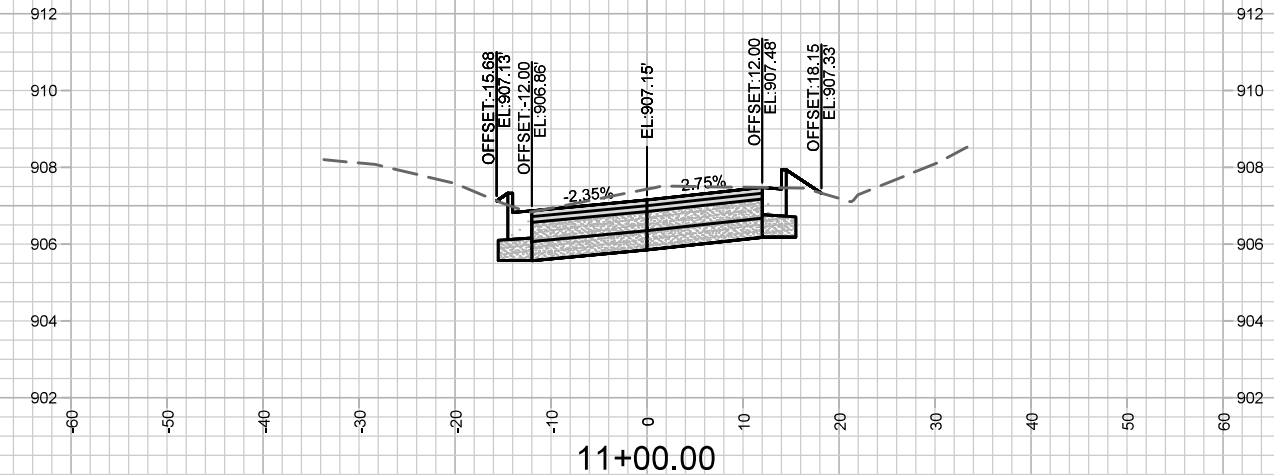
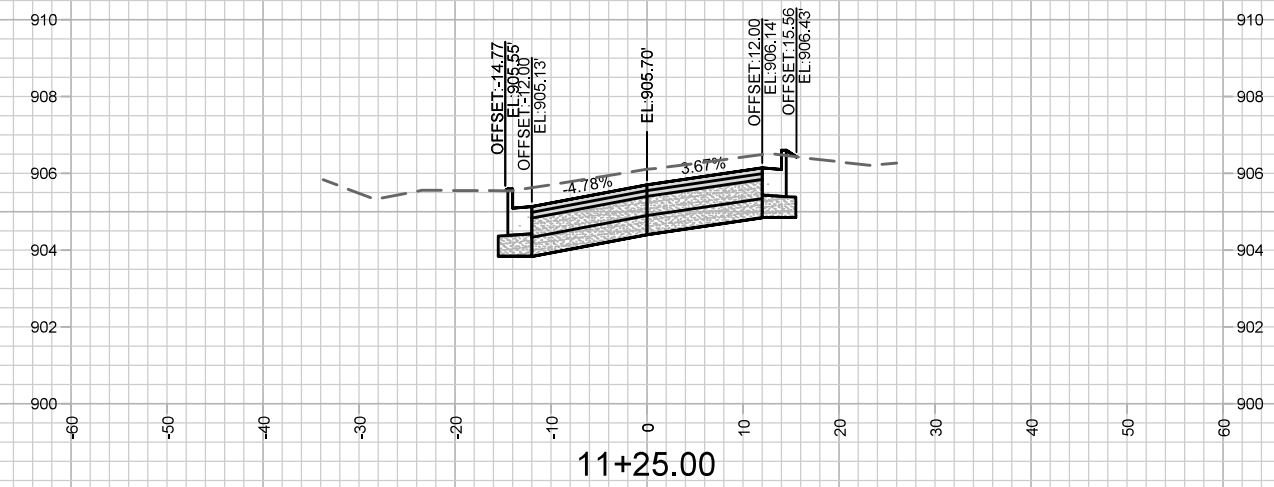
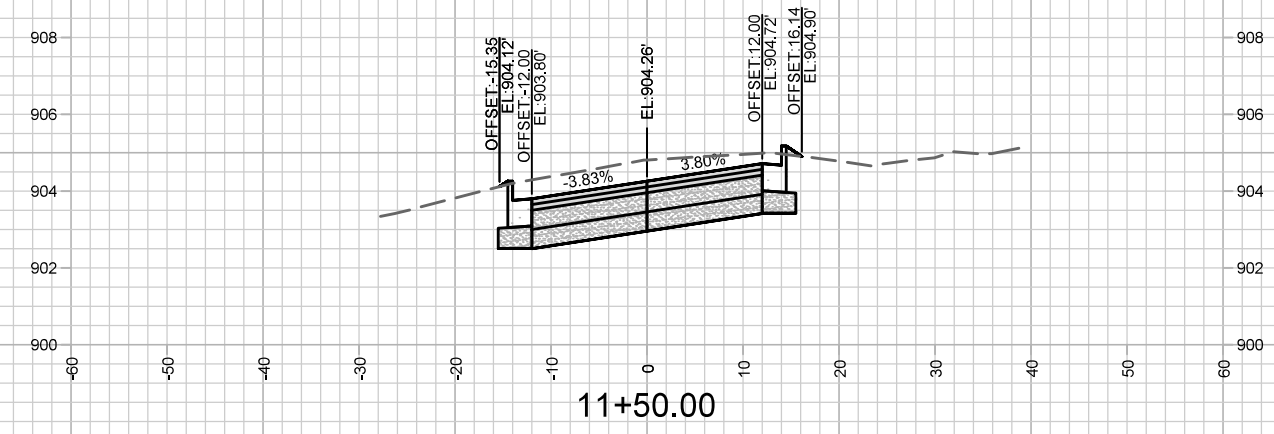
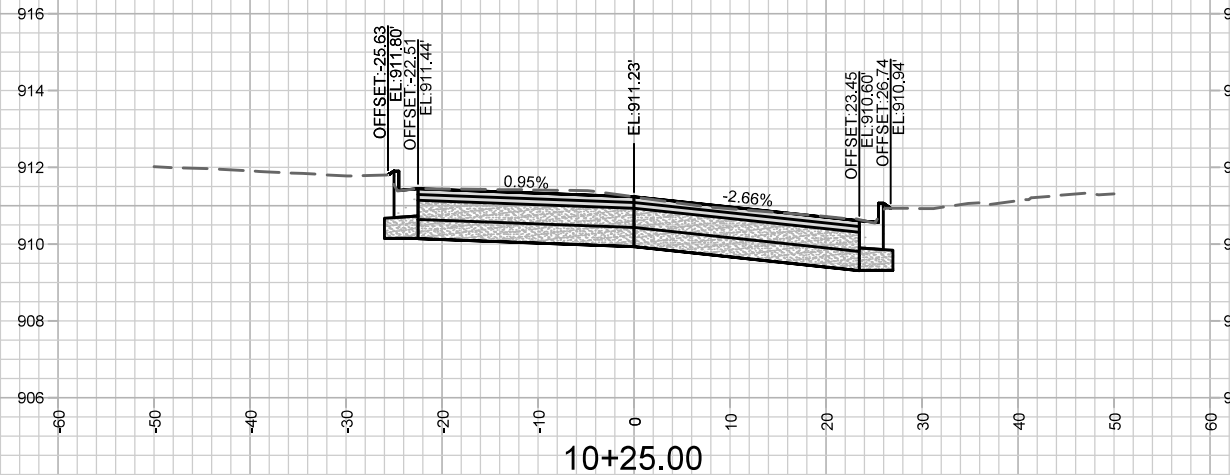
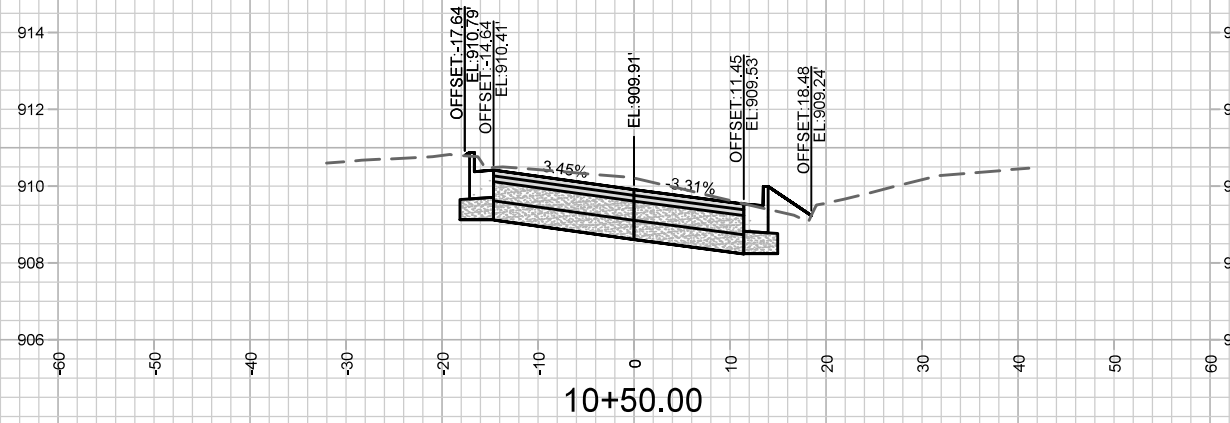
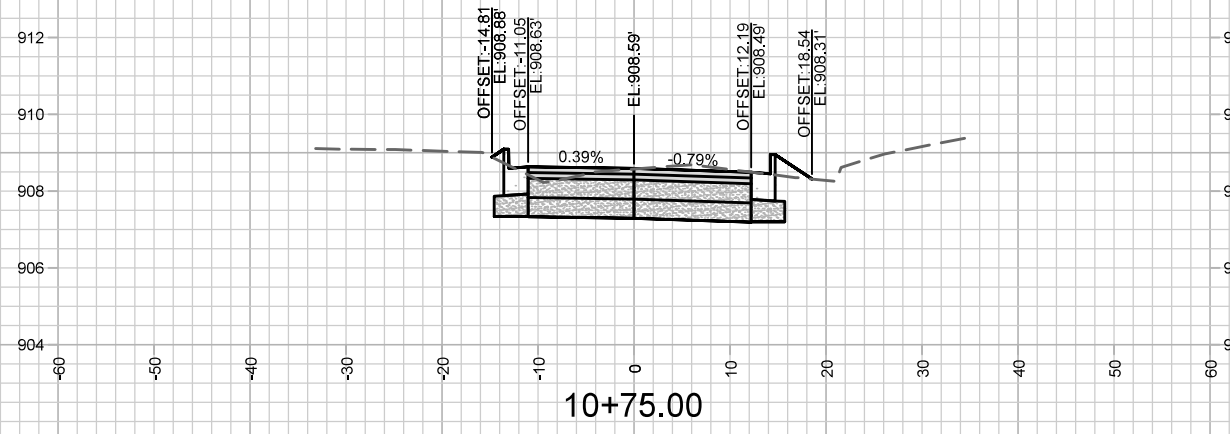
SPECIFIC NOTES:

- [1] EXTEND PRIVATE STORM SEWER LATERAL FROM STRUCTURE TO PROPERTY LINE
- [2] EXISTING STORM STRUCTURE TO BE CONNECTED TO NEW PIPE

STANDARD NOTES:

- PLAN LENGTH (PAY LENGTH) IS FROM CENTER OF STRUCTURE TO CENTER OF STRUCTURE. PIPE LENGTH IS ACTUAL LENGTH OF PIPE FROM STRUCTURE WALL TO STRUCTURE WALL. SLOPE CALCULATED USING PIPE LENGTH.
- ALL REBAR FOR FIELD Poured STRUCTURES SHALL BE EPOXY COATED. ANY EXPOSED STEEL SHALL BE TOUCHED UP OR RECOATED PRIOR TO USE.
- ALL FIELD Poured SAS STORM STRUCTURES SHALL BE CONSTRUCTED IN ACCORDANCE WITH STANDARD DETAIL DRAWING 5.7.3. ALL PRECAST SAS STORM STRUCTURES SHALL BE CONSTRUCTED IN ACCORDANCE WITH STANDARD DETAIL DRAWING 5.7.5.

- ABBREVIATIONS: AE = APRON ENDWALL; RCP = REINFORCED CONCRETE PIPE; HERCP = HORIZONTAL ELLIPTICAL REINFORCED CONCRETE PIPE; DNA = DOES NOT APPLY; SAS = SEWER ACCESS STRUCTURE; LP = LOW POINT INLET STRUCTURE; FP = FIELD Poured STRUCTURE; TR = TOP OF CONCRETE ROOF; NCM = NO CROWN MATCH FOR PIPES; UD = UNDERDRAIN
- APPROXIMATE DISCHARGE E.I. GIVEN, ADJUST E.I. AND PIPE SLOPE IN THE FIELD.
- TOP OF CASTING GRADE GIVEN IS THE TOP OF CURB FOR INLET STRUCTURES AND THE FLOWLINE OF THE CLOSED CASTING FOR SAS's.
- ALL REINFORCED CONCRETE PIPES TO BE CLASS III UNLESS OTHERWISE NOTED.
- SURVEYOR TO CONFIRM THAT ALL INLET STATION / OFFSETS LINE UP WITH PROPOSED CURB AND GUTTER.
- ALL STRUCTURES CALLED OUT AS FIELD Poured SHALL BE FIELD Poured. ALL OTHER STRUCTURES (NOT INDICATED AS FIELD Poured) SHALL BE



MARK	REVISION	DATE	BY

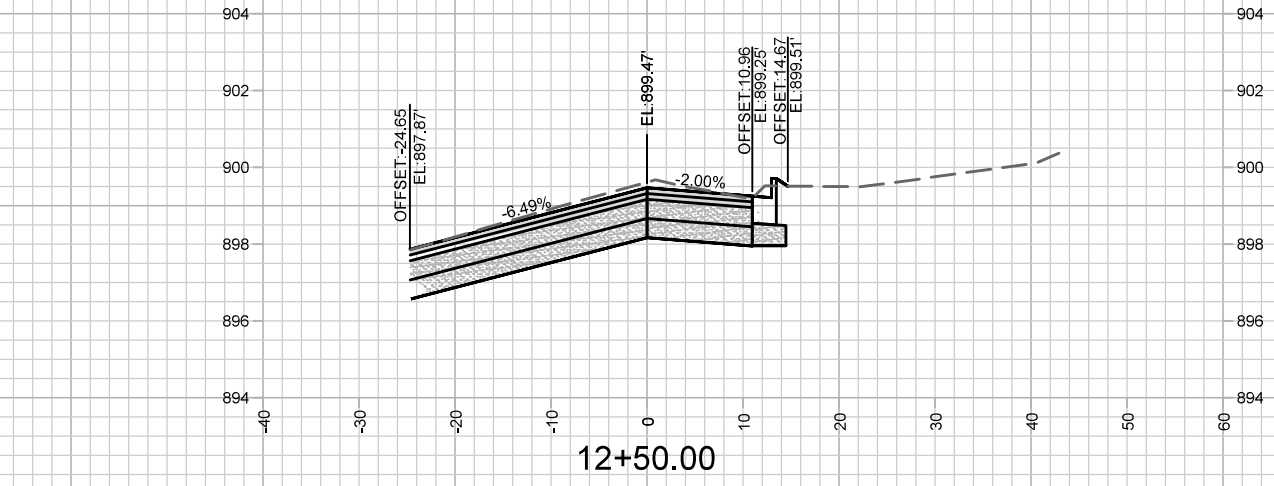
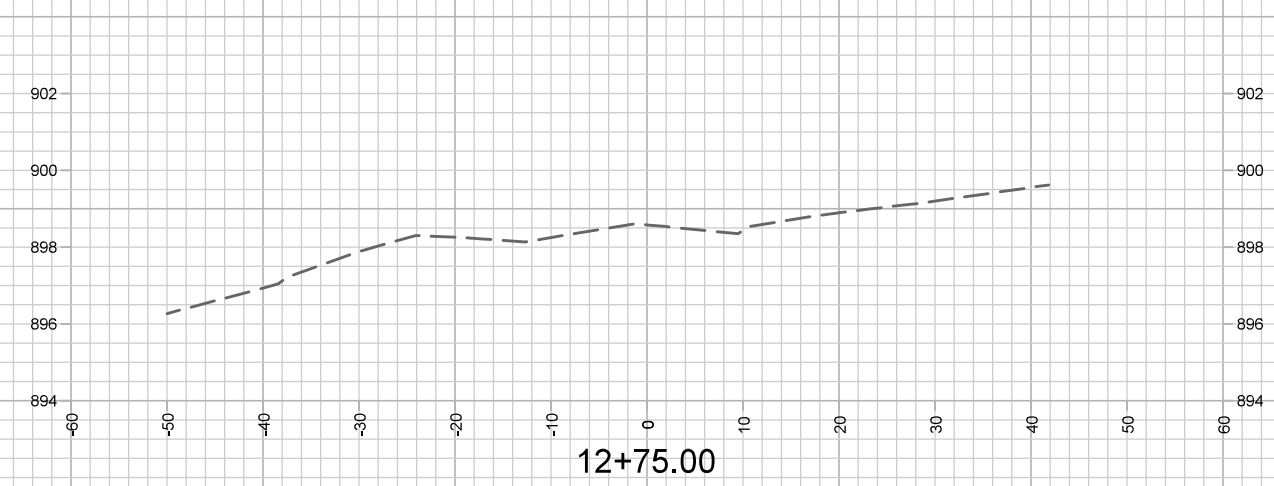
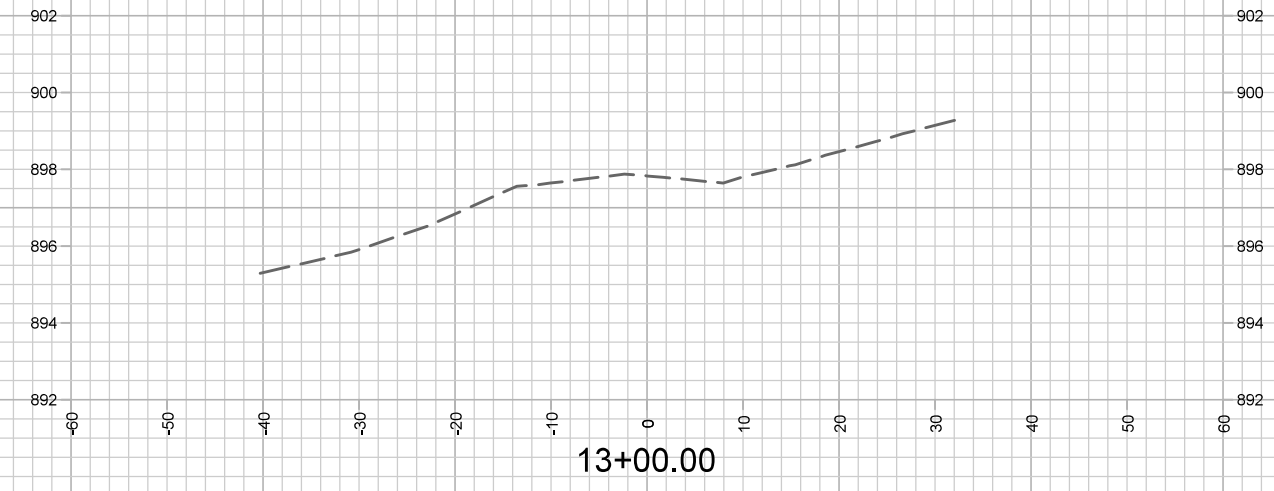
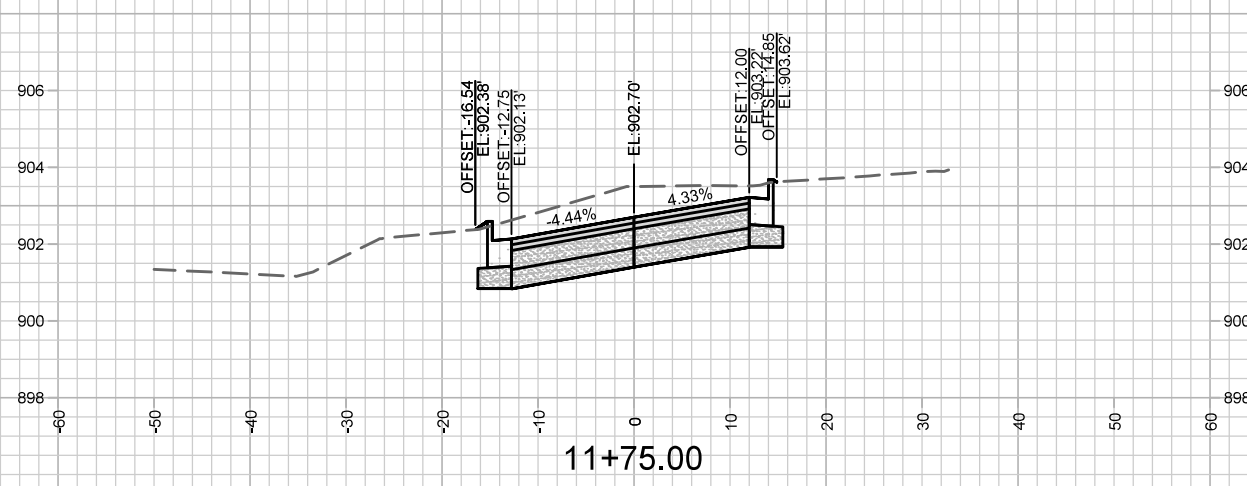
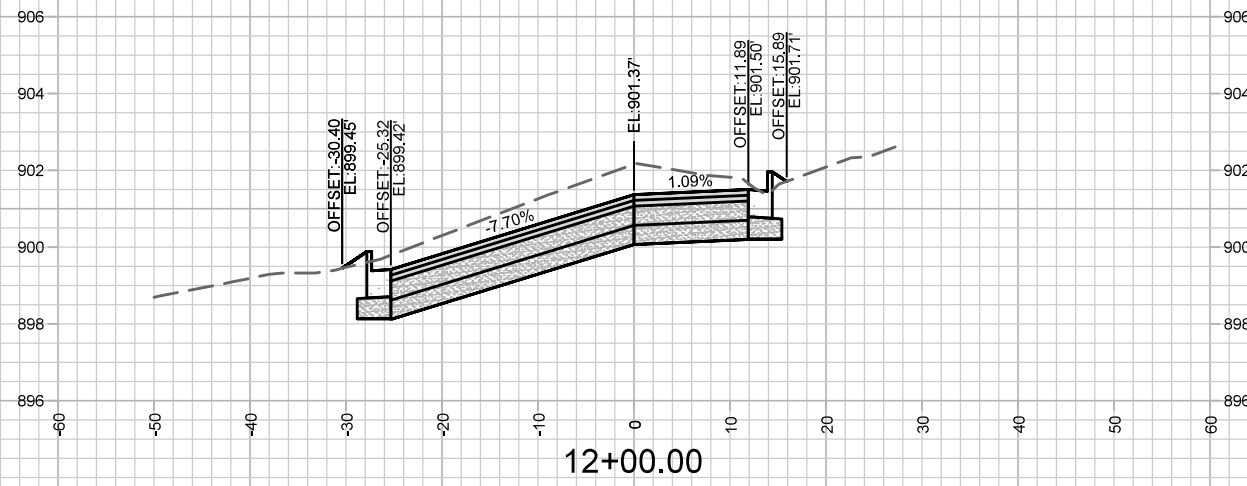
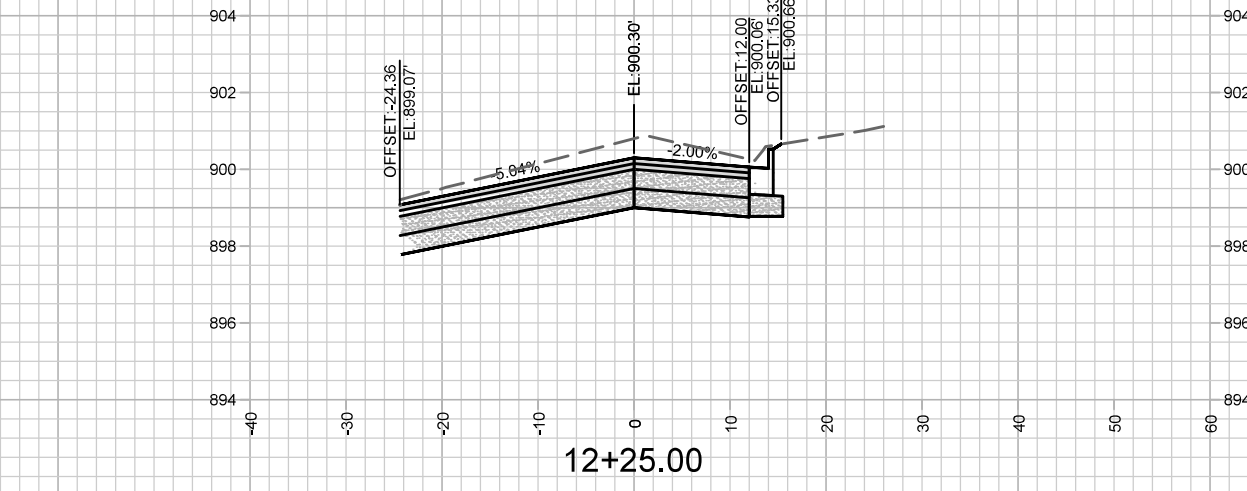
Designed By: SMS
Date: 4/29/2020 11:36 AM
Scale: 1" = 20'
12717

12717
MADISON, WI
CONTRACT NO: 8514

X-1
JULIA ST, JULIA CIR & BAKER AVE ASSESSMENT DISTRICT -2020
M:\DESIGN\Projects\12717\CAD\Streets\12717EN-Streets_Corridor.dwg



12717



MARK	REVISION	DATE	BY

12717
 MADISON, WI
 CONTRACT NO: 8514

JULIA ST, JULIA CIR & BAKER AVE ASSESSMENT DISTRICT -2020
 M:\DESIGN\Projects\12717\CAD\Streets\12717EN-Streets_Corridor.dwg



12717
